

WEATHER

Aug. 9	47	66	0.00
Aug. 10	50	70	0.00
Aug. 11	50	74	0.01
Aug. 12	46	78	0.00
Aug. 13	50	84	0.00
Aug. 14	52	89	0.00
Aug. 15	58	74	Trace

By H. K. L.

The Chelsea Standard

QUOTE

"It is magnificent to grow old if one keeps young."
—Harry Emerson Fosdick.

HUNDRED-THIRD YEAR—No. 9

12 Pages This Week

THE CHELSEA STANDARD, THURSDAY, AUGUST 17, 1972

15c per copy

SUBSCRIPTION: \$4.00 PER YEAR

FAIR OPENS NEXT TUESDAY

Grid Activities Officially Start Next Monday

Chelsea football officially begins this Monday, Aug. 21, with practices of 80 to 90 players attending practices.

There are 37 candidates for this year's varsity, which will be led by captains end Jeff Daniels, half-back Tim Lancaster, and quarterback John Mann.

Each Phil Bareis reminds players that they must have a physical examination by their doctor before participating.

Varsity candidates will be issued equipment Saturday, Aug. 19, from 9 to 11 a.m. Sophomores and freshmen will be issued equipment Monday, Aug. 21, at 9 a.m. Junior high football will begin the first week of school.

The first week of practice will consist of conditioning, with players wearing helmets and football shoes. The junior varsity and freshmen will practice at Chelsea High school, while the varsity will practice at conditioning camp near Chelsea.

The 1972 season shows Chelsea having two new opponents, Manchester, Nov. 10. The remaining schedule is the same as last year's with the sites reversed. Chelsea gives Chelsea five home games and four away games.

The team will play Dexter, at home, Sept. 22; at Saline, Sept. 29; at Lincoln, at home, Oct. 6; Novi, at home, Oct. 13; at Dundee, Oct. 20.

Enter Floats Now For Fair Parade

Any persons interested in entering a float in the Chelsea Community Fair parade Saturday, Aug. 26, are asked to notify David Longworth at 475-7328. No registrations have been received at this time. Any questions regarding the floats will be answered.

South Lyon, at home, Oct. 27, and at Milan, Nov. 3.

The junior varsity will play eight games, while the freshmen will have a seven-game schedule.

Returning lettermen include Ron Adams, Steve Bergman, Bob Elliott, Mark Grambau, Bruce Gustaf, Bill Harrison, Don Houle, Keith Hume, Mike Merkel, Jeff Schmidt, Jeff Van Riper, Steve Worden, Randy Young, Dave Luckner, Dan Schulze, and captains Daniels, Lancaster, and Mann.

Chelsea Girls In YM-YWCA Bus Accident

Two Chelsea girls were among the 45 youth injured Saturday, Aug. 12, when their YM-YWCA bus, driven by a substitute driver, failed to negotiate a sharp turn west of Bay City and rolled over three times.

11-year-old Gail Albrecht and her 12-year-old sister, Dawn, daughters of Mr. and Mrs. Gary Albrecht of 13580 Waterloo Rd., were slightly injured and released to their parents' care Sunday, Aug. 13. Gail, who was asleep at the time of the accident, fell on her back when the bus turned over and some bruises. Her sister, Dawn, suffered a sprained finger and bruises on her legs.

Officers said that the accident occurred at approximately 2:30 p.m. The bus was coming down a freeway exit ramp connecting eastbound US-10 and southbound I-75. Police said that there were 350 feet of skid marks on the road where the bus failed to negotiate the turn.

The bus was one of two returning. (Continued on page four)



WHO WILL BE QUEEN? One of the candidates pictured here will be the 1972 Chelsea Community Fair Queen. Pictured left to right are: Ann Merkel, junior class representative; Judi Blaess, Kiwanis club entrant; Cathy Clark, 1971 Fair Queen; Martha Blanchard, freshman class representative; and Susan Shaw, sophomore class entrant. Margaret Lancaster, senior class representative, is not pictured. The Queen will be chosen Tuesday, Aug. 22, following the Kiddie Parade.

5 Queen Candidates Seek Title

Who will be the Queen of the 1972 Chelsea Community Fair? As of Monday, Aug. 14, there were five candidates: Ann Merkel, Judi Blaess, Martha Blanchard, Susan Shaw, and Margaret Lancaster.

Each of the five candidates will perform in different areas of talent, one of the areas in which they must compete.

Margaret Lancaster, the senior's choice, will amuse the audience with a Charlie Chaplin dance. Ann Merkel, representing the junior class, will sing and play "Scarlet Ribbons" on the piano.

Susan Shaw, candidate of the sophomore class, will play "Goodnight My Someone," on the piano, then present a dramatic interpretation of the song. Martha Blanchard, chosen by the freshmen, will entertain with her presentation of "Peaches Kneecracker," a little-girl comedy routine.

Kiwanis club is sending Judi

Blaess as its representative. She will present "Special Friend," a one-act play which she wrote about how said it is to grow up.

Putting on the Queen Pageant has become quite involved. Chairman of the committee, Judy Eubanks, has six women hard at work. Each of the women is a past queen.

Sherry Owings and Margo Koenn are preparing the stage. Jane Mann is trying to locate convertibles and escorts while making preparations for the tea. Cathy Clark is typing up forms and schedules, and preparing for the ribbon cutting ceremony. Ruth Musbach is collecting gift donations from the merchants. Carol Flintoft is responsible for the judges.

Master of Ceremonies Paul Frisinger will start the Tuesday evening Pageant at approximately 7:25 p.m. Aug. 22, after the Kiddie Parade.

The selection of Queen candidates will take place at 7:25 p.m. with Paul Frisinger acting as Master of Ceremonies for the evening.

The program for the evening will be provided by the Queen Court—Mrs. J. Eubanks, Mrs. Charles Koenn, Cathy Clark, Mrs. P. Flintoft, Mrs. A. Musbach, Mrs. Ralph Owings, and Jane Mann. Music will be provided by the Lake Valley 4 beginning at approximately 8:15 p.m.

Wednesday has been designated Dexter Day. The judging of exhibits will begin at 9 a.m., and the judging of the livestock will follow at 10 a.m. Afternoon activities consist of the continued judg-

Special Events Scheduled for Each of 5 Days

Each day at the upcoming Chelsea Community Fair is designated a special day, and activities of the day center around a particular focal point.

Tuesday is Children's Day. The program for the day is sponsored by the Chelsea Kiwanis Club. John Morris will serve as chairman.

The fun begins in the afternoon. All exhibits will be on display, and rides and concessions will be operated by Ingalls Amusement Co. All children's rides on that day are at reduced rates from 1 to 5 p.m. There will also be live radio broadcasts from the fairgrounds.

At 6 p.m., the children's parade will begin from the municipal parking lot downtown to the fairgrounds.

At approximately 6:45 p.m., the Fair will be officially opened with a ribbon-cutting ceremony at the gate of the fairgrounds with Village President A. E. "Mac" Fulk, Fair President Allen Brossamle, and the 1971 Fair Queen, Cathy Clark.

A live radio interview will be conducted with the Fair Queen court at 7 p.m. Radio WPAG personalities Frank Giegler and Howard Heath will be present.

The selection of Queen candidates will take place at 7:25 p.m. with Paul Frisinger acting as Master of Ceremonies for the evening. The program for the evening will be provided by the Queen Court—Mrs. J. Eubanks, Mrs. Charles Koenn, Cathy Clark, Mrs. P. Flintoft, Mrs. A. Musbach, Mrs. Ralph Owings, and Jane Mann. Music will be provided by the Lake Valley 4 beginning at approximately 8:15 p.m.

Wednesday has been designated Dexter Day. The judging of exhibits will begin at 9 a.m., and the judging of the livestock will follow at 10 a.m. Afternoon activities consist of the continued judg-

ing of horses. All exhibits will be on display. Live radio broadcasts will continue from the fairgrounds, and rides and concessions by Ingalls Amusement will be in operation.

At 6:45 p.m. festivities will be provided by the Stockbridge Squares dance group. The presentation of showmanship awards by the 1972 Queen and Court will follow at 7:20 p.m. Don Hackney will serve as Master of Ceremonies. Livestock judging at the grandstand area for the public will take place from 7:30 to 9 p.m.

Thursday is set aside as Chelsea Day. The weighing of small compact tractors (garden-size) will begin at the Chelsea Milling Co. at 1 p.m. It is expected to be completed by 3 p.m.

The tractor pull for small tractors begins at 3 p.m. There will be four categories: lightweight, middleweight, light-heavy, and the lightweight classes. Prizes will be awarded in each class.

The Chelsea, Dexter, and Ann Arbor fire departments will compete for the large "Water Polo" trophy at approximately 6:30 p.m.

The sale of livestock by Price Bros. Auctioneers begins at 7:20 p.m. and the small tractor pull resumes at approximately 8:15 p.m.

Friday has been designated Farmers Day. Masters of Ceremonies will be Don Johnson and Bill Ames. The tractors, in the lightweight, middleweight, light-heavy, and heavyweight classes, will be weighed in at Chelsea Milling Co. beginning at 8 a.m.

The tractor pulling contest starts at 10 a.m., beginning with the light-weight classes. Prizes of \$20, \$15, \$10, and \$5 will be awarded in each class. \$200 in all will be awarded.

Meanwhile, rides and concessions and exhibits will be open to the public. At 6:30 p.m., the 1972 (Continued on page three)



BOOST FOR HOME MEALS: Mrs. Michael (Judy) Eubanks, left, Jaycee Auxiliary president, and Mrs. Arthur (Anne) Steinaway, right, member of the nutrition project committee and chairman of the balloon sale project, present a check for the Home Meals Service to Mrs. James (Caralee) Hoffmeyer, nutrition project chairman. The project plans to bring one hot meal a day to elderly or disabled persons who find it difficult to shop or prepare their own meals. The Jaycee Auxiliary, under Mrs. Steinaway, sold balloons during the Sidewalk Sales to provide for the donation.

Home Meals Service Boost

The "Home Meals Service of Chelsea," a joint effort of Church Women United and the Jaycee Auxiliary, got a big boost as the auxiliary presented Mrs. James Hoffmeyer with a check for the project Tuesday, Aug. 15.

The project began in mid-June as a pilot project. Planners hope to have it in full operation in September.

The nature of the operation will be to bring one hot meal a day to elderly or disabled persons who would find it difficult to shop and prepare their own meals. This includes persons temporarily unable to cook because of recent illness or hospitalization.

Each meal will cost \$1.15. Each customer must buy a minimum of five days a week. Meals will be served every day, including holidays, for those who want it. Persons may cancel at any time.

All special diets will be prepared, no matter how complicated. Food will be prepared at the Chelsea United Methodist Home under the supervision of a dietitian.

Seventeen persons have been served so far this summer, 12 at one time.

All applicants will be interviewed in their homes. For an application blank, interested persons may call Mrs. Jack Merkel, 475-

2739; Mrs. V. O. Johnson, 475-3031; Mrs. Arthur Steinaway, 475-2923; or Mrs. James Hoffmeyer, 475-8014.

The planners have itemized their primary needs at this time. They are: money for equipment, containers, and to pay for meals for any customer who may not be able to pay the total cost. The group is no longer seeking government funds. They have decided to carry the project out as a simple volunteer service with no paid employees. Contributions may be mailed to Mrs. Johnson, treasurer, at 803 W. Middle St.

Volunteers are also needed. More drivers are needed before the route can be set up.

Fair Restaurant Is Co-op Venture

Whatever your pleasure, you are sure to find it at the Chelsea Community Fair, running from Tuesday, Aug. 22 to Saturday, Aug. 26. Exhibits, rides, food, and exciting contests are certain to hold your attention.

The Community Fair Restaurant will be open at the Community Fair Service Building. It is assisted by support of all women in the surrounding community.

Always on hand at the restaurant will be hamburgers, cheeseburgers, fishburgers, french fries, potato salad, baked beans, cole slaw, home-made pies, ice cream, and soft drinks.

The breakfast menu will consist of bacon, ham, eggs, milk, toast, pancakes, french toast, and sweet rolls.

Each night of the Fair, one club or service organization will serve the dinner. Tuesday night dinner will be served by the Kiwanis Club, and will consist of roast beef, roast pork, and meatloaf.

Wednesday night dinner will be served by the K. of C., who will feature Swiss steak, roast beef, roast pork, baked ham, and sweet potatoes.

Thursday night dinner will be St. Paul church, serving roast turkey and dressing, roast beef, and roast pork.

Friday night dinner will be served by Zion Lutheran church, and will feature Swiss steak,

roast beef, roast pork, and fish sandwiches.

Saturday dinner, put on by the Zion Lutheran softball team, will serve fried chicken, roast beef, and roast pork.

You could eat your way through the Fair, easily.

Rockwell Team Wins Slow Pitch Softball Title

North American Rockwell Independents secured first-place in the slow pitch softball league with a 12-0 record. The victors celebrated at Manager Russ Pichlik's home Sunday, Aug. 13. Attending the celebration were: Paul Garmon, Larry Shively, Charlie Waller, Doug Stewart, Jack Patrick, Max Plank, Ed Brown, Randy Johnson, Steve Graffund, and Bob Riemenschneider. Bat boys for the team were Doug and Eric Pichlik.

Sidewalk Days Success

Despite the mugginess and occasional showers, Chelsea shoppers couldn't be lured away from the Sidewalk Sales bargains downtown Friday and Saturday, Aug. 11 and 12. Crowds of shoppers filled the sidewalks as they searched for the fantastic bargains promised to them by Chelsea merchants.



MURPHY'S BARBER SHOP, which had a 10-0 record for the season, a new record for the Little League, also became the first league champs to defeat the All-Star team. They took the game, 9-6, Tuesday evening. Pictured, left to right, are, front row, Billy Klobuchar, Steve Dresch, Rod Sweeny,

and Mike Wood. Second row, from left, John Scott, Jeff Powell, Chris Umstead, Jeff Stirling, Todd Koch, and Mike Machesky. Back row, from left, Harold Dresch, coach, Brian Hosler, Stuart Blackwell, Randy Harris, Jim Stirling, and Coach Machesky.

Undefeated Little League Champs Defeat All-Stars

For the first time ever in Little League history, the league champs defeated the All-Stars. Murphy's Barber Shop edged the All-Stars, 9-6, Tuesday, Aug. 15.

Murphy's jumped ahead, 3-0, in the first inning on a walk to Brian Hosler and back-to-back singles by Mike Machesky and Steve Dresch.

In the second inning, three walks were followed by Randy Harris' home run, which increased Murphy's lead to 8-0.

The All-Stars finally broke out in the third inning, scoring three runs on hits by Steve Check and

Joe Ewald. In the fourth inning, a double by Jeff Eder and a double by John Dunn gave the All-Stars another run.

The All-Stars scored a run in the top of the fifth on a home run by Phil Steinbauer. In the bottom of the fifth, Murphy's scored a run on a walk to Billy Klobuchar and a double by Steve Dresch.

In the seventh inning, a single by Steve Stardard, followed by a triple by Phil Steinbauer, started the All-Stars on a rally which was crushed by a diving grab of

a line drive by Steve Dresch with two men on base. This year's All-Star game saw two records broken. Besides this being the first year that the league champs defeated the All-Stars, it was also the first year that the Little League champs have gone undefeated.

FINAL STANDINGS

	W	L
Murphy's Barber Shop...	10	0
North Amer. Rockwell	4	6
W. C. Weber Const. Co.	3	6
Nillage Motor Sales	2	7

HCMA Request for 1/2 Mill Soundly Defeated at Polls

Huron - Clinton Metropolitan authority met Thursday, Aug. 10, to discuss the results of the HCMA referendum. The authority voted to reject the HCMA request for a 1/2 mill increase in property taxes. The vote was 14-6, with 14 in favor of rejection and 6 in favor of the HCMA request.

HCMA Director David O. Laidlaw said that the defeat does not mean the automatic dropping of the authority's plans to build new parks. Authority members at the Aug. 10 meeting announced determination to go ahead with the plans, although maybe at a slower pace.

Earlier, Laidlaw had stated, "We have some money for looking ahead a little. I can't say we'd go head and develop a park in the park. This is a matter for the board of directors to decide."

"Our rate of progress will be slower than it would be if we had obtained the millage, but we still have the quarter mill (levied by HCMA since 1942 within each of the five counties) and the HCMA has agreed to operations of its 10 existing parks. Yet the HCMA had hoped to use the tax increase to develop three new metropolitan parks (including Mill Creek in Lima township) and to lease and rebuild Belle Isle Park a Metropolitan park."

A look at the vote tallies show that Washtenaw county's rejection of HCMA's millage request, 14,630 to 10,651, was less overwhelming than the margins in the other four counties. Ann Arbor voters endorsed the proposal 7,740 to 6,203.

The only other community in

the five-county area that cast a majority of its votes in favor of the proposed was Rochester in Oakland county, which gave HCMA a 298 to 281 vote.

No township in Washtenaw county came close to casting a majority of its votes in favor of the request. Citizens have organized opposition in western Washtenaw county, where the authority hopes to develop land in Lima and Freedom townships as Mill Creek Metropolitan.

Lima township produced 331 votes against the proposal, 13 for it. Lyon township voted 8 yes and 117 no. Sylvan Precinct No. 1, turned in 30 yes and 264 no tallies. Sylvan Precinct No. 2 tallied 19 yes and 256 no.

Dexter township produced 49 yes votes to 327 no votes. Webster township turned in 44 yes and 100 no votes.

Scio township, which is the site of the HCMA's Delhi and Dexter-Huron parks, rejected the proposal 982-398.

Wayne county voted 195,362 no and 114,745 yes. Wayne is the site of Lower Huron and Willow Metroparks.

Livingston county defeated the proposal by a 4-1 margin, 6,650 no to 1,861 for it. Kensington Metropark's southwest portion is located in that county.

Macomb county cast 48,745 votes against the request and 21,170 yes votes. Macomb is the site of most of Stony Creek Metropark and all of Metropolitan Beach Metropark.

Oakland county voted 59,137 no to 36,198 yes.

Lamb Feeders Meet Set for Next Wednesday

The director of sheep research at the University of Minnesota will be the featured speaker at a meeting for lamb feeders Wednesday, Aug. 23, at the Michigan Livestock Exchange Auction Yard near Manchester.

A lamb supper will be served at 6 p.m., and the program will conclude at 9 p.m. Reservations should be made with William Ames, Washtenaw county extension agent, County Building, Ann Arbor 48108, (313) 663-7511.

Howell

Livestock Auction

Mason 677-8941
The Wise Owl Says Ship to Howell
SALE EVERY MONDAY, 2 p.m.
Phone 546-2470, Bill Franklin

Market Report for Aug. 15

CATTLE
Good to Choice Steers, \$35 to \$37
Good to Choice Heifers, \$32 to \$34
Feeder Cattle, \$20 to \$25
Fat Beef Cows, \$21 to \$23

COWS
Heifer Cows, \$25 to \$30
UT-Commercial, \$25 to \$28
Canter-Cutter, \$23 to \$26
Fat Beef Cows, \$21 to \$23

BULLS
Heavy Bolognas, \$32 to \$34.75
Light & Common, \$20 and down

CALVES
Prime, \$58 to \$60
Good-Choice, \$52 to \$58
Feeder Cattle, \$20 to \$25
Cull & Meat, \$30 to \$35

FEEDERS
800-900 lb. Good to Choice Heifers, \$35 to \$38
400-700 lb. Good to Choice Steers, \$35 to \$38
800-900 lb. Heifer Steers, \$35 to \$41
500-800 lb. Heifer Steers, \$30 to \$35
Common-Meat, \$20 and down

SHEEP
Woolled Slaughter Lambs:
Choice-Prime, \$30 to \$32
Good-Utility, \$28 to \$30
Slaughter Steers, \$28 to \$32
Feeder Lambs, all weights, \$28 to \$30

HOGS
200-250 lb. No. 1, \$29 to \$31
200-250 lb. No. 2, \$28 to \$29
240 lb. and up, \$28 to \$29
Light Hogs, \$28 and down

BEARS AND SWEETS
All weights, \$25 to \$25.50

FEEDER PIGS
Per Head, \$18 to \$28

HAY
1st Cutting, 80c to 90c
2nd Cutting, 60c to 65c

STRAW
Per Bale, 30c to 50c

COWS
Tested Dairy Cows, \$350 to \$500
Tested Beef Type Cows, \$250 to \$350



★ MICHIGAN MIRROR ★

by Elmer E. White, Secretary, Michigan Press Association

Hot Dog Defended

State officials leaped to the defense recently of the seemingly lowly Michigan hot dog. This included visits to Washington, D.C.

The hot dog (as produced in this state) is attacked by a group of national meat packers who don't like the restrictions put on what can go in the hot dog and by consumer groups which object to what is allowed (in most other states).

Michigan has the highest standards of any state in the union for its hot dogs. The state allows only fresh skeletal meat, muscle tissue only, to be used as the meat ingredient in hot dogs.

That meats Michiganers don't get such remnants of a butchered animal as lips, snouts, ears, bladders, lungs or entrails in the hot dogs they buy in this state.

The federal law isn't as strict.

It allows the use of such left over parts of the body, lumped together under the term offal, to be used in hot dogs, sausages and bologna.

Three large meat firms, Armour, Wilson and Hormel, have gone in to the federal courts trying to get the courts to rule the Michigan regulations are too strict and need not be enforced. This would allow them to freely ship into the state meat they processed elsewhere under less rigid restrictions.

The meat firms lost their case in the federal district court and now are trying again at the U.S. Appeals Court level. Both Gov. William G. Milliken and Attorney General Frank J. Kelley have been firm in fighting the meat people, Kelley in the courts and Milliken in the political arena.

When meat firms lost their initial court effort, they went to Congress to try to get a bill passed

forbidding Michigan for enforcing its stricter regulations.

Milliken fired off a letter to the House Agriculture Committee protesting the proposal to force Michigan to weaken its stand. He told the committee the proposal was "an injustice to Michigan consumers, and I urgently request you to delete it from the measure."

State Agriculture Director B. Dale Ball appeared before the committee and won his points. The committee finally voted 9-8 to knock out the weakening amendment, giving Michigan another victory.

The battle isn't completely over yet, and Michigan officials have vowed not to give up.

"In most other states, sausage, bologna and hot dogs serve as a dumping ground for a wide range of animal by-products under prevailing federal standards," Ball says. "Our quality products are worth fighting for."

Yellow In Use

Yellow is becoming a much more popular color with Michigan highway officials this year.

It's all part of a nation-wide program of highway marking intended to use yellow paint for marking all highway points that cars either should not cross at all or should exercise caution before crossing. Whenever a driver sees a yellow line, it will mean traffic is approaching from the opposite direction.

By the end of fall, all of the state's more than 9,000 miles of highways will be converted to the system.

Basically there are main changes:

—on two-lane highways the broken white line down the middle of the highway is being converted to yellow. A solid yellow line is still being used to mark no passing zones.

—center lanes for left turns only will have a solid yellow line on the edge of the lane next to oncoming traffic and broken yellow lines on the other side of the lane. This replaces what formerly was a solid white combination.

The department still uses broken white lines to mark freeways to separate lanes of traffic moving in the same direction.

For the motorist then, the basic rule is this: If you see yellow lane markings on the highway ahead of you, there is traffic coming from the opposite direction on the other side of the yellow line. Make sure the road is clear before you cross that yellow line.

Uncle Lew from Lima Says:

DEAR MISTER EDITOR:

Did you see that item in the paper the other day where this housewife piled all her dirty clothes in the middle of the kitchen floor and set fire to em? That may be of a blow to the Western liberation; but my bet is, Mister Editor, that her washing machine broke down again and she went temporary insane. She probably had one of them electronic models with 10 cycles that would do everything but work.

General speaking, the more technical marvels we dream up the more headaches we get. I know it's that way in yore business. It used to be you could fix your equipment yourself, or call in the blacksmith. Now with them computers all you can do is put in a telephone jack beside the thing where you can call the factory and tell a technician where it hurts. That way you are lucky. If they have to send a feller to work on it, you can buy a new one nearly for what the repair bill is.

Actual, we still got "lifetime guarantees," but now you got to go to court to figure out whose life the guarantee is talking about, yores or the 30-day warranty. I have studied this situation up one side and down the other, and I have figured that the troubles of appliance, equipment and car owners runs according to service to keep it going. Soon or late, everybody is going to have a houseful of technical miracles that won't work. It use to be said that a feller could drain all his resources trying to support a flashlight, a car, the smoking habit and a old lady. Now you can multiply that list by the 30 or so gadgets in the average house.

I see by the papers where a team at the Massachusetts Institute of Technology has started a two-year study of "servicing reliability and maintenance of consumer durables," which I take to

cover everything from battery-powered back scratchers to jet planes. That team, Mister Editor, has got their work cut out for em.

Practical speaking, most of our study probably will be like I had it, \$118,000 Government study of noisy truck tires. They figured out the tires wouldn't be so loud if the trucks would slow down.

That's as much help to me as this item in the New York City budget that sets up a department to clean up after "relieved dogs." They already got a law again dogs "relieving" in the street, but that ain't been much help.

But just when we get the idea the country is going to gadget itself to a grinding halt, we see by the papers where Nader has found out that Australia is falling apart. Folks down under is suffering the same kind of technical stroke we're having, according to Nader.

Personal, I'd like to get in on this gadget revolution afore we are took over complete by computers. All I need is somepin I can make for a dollar, rent for a dollar a month, and is habit-forming.

Yours truly,
Uncle Lew.

Orange-flavored sherbet is the big favorite with 44.6 percent of U.S. consumers. Second place line pulled 14.7 percent of the votes.

12th ANNUAL HAWAIIAN LUAU SATURDAY, AUG. 19

ROAST PIG and LAMB

FOOD - COSTUMES - MUSIC

Featuring
DICK McINNIS
at the Organ

at the
Dexter American Legion Post 557

MEMBERS and GUESTS

"OPPORTUNITY KNOCKING"

Become a dealer for the truly beautiful and totally conventional Wick Home.

With prices ranging from \$10,383 to \$30,000 your success is unlimited.

Write Box 396

WICK HOMES
Coldwater, Mich. 49036

JUST REMINISCING

Items Taken from the Files of The Chelsea Standard

4 Years Ago...

Thursday, Aug. 22, 1968

Chelsea Jaycees attending the annual Summer Board meeting at Alma College were Mr. and Mrs. Donald Proctor, Mr. and Mrs. Doug Robeson, Mr. and Mrs. Robert Udegaff, Mr. and Mrs. Ronald Brannan, Mr. and Mrs. Art Steinaway, Mr. and Mrs. Tom Thalner, Mr. and Mrs. Ed Akin, Mr. and Mrs. Jerry Heller, and Dave Martin.

Barbara J. Doyle of 1223 Meadow Lane, Patricia Kay Guest of 146 E. Summit, and James W. Hanson of 545 Howard are on the scholastic honors list at Central Michigan University this semester.

The champs pitch it out with the All-Stars this Sunday at the Chelsea Ball Park. Members of the winning Wolverine team include Silas Hopkins, Michael Sweet, Charles Mattoff, Tom Andrew, Robert Purcell, Benny Powell, John Judson, Donald Joseph, Martin Tobin, Jim Hanson, Ken Bucholtz, Ron Eder, James Romine, Kenneth Norris, Joseph Fisher, and A. Wisniewski. Manager Robert Draper and coach Phil Weitauf will guide John Meehan, Gary Packard, Mary Everly, Ed Lauson, Howard Derry, Mac Plank, Alton Nixon, Jerry Ringe, Dave McLaughlin, and Bruce Galbraith.

Louis Schneider, Jr., a retired first lieutenant in the U.S. Marine Corps, is the latest addition to the Chelsea Police Department.

Some Chelsea entrants at the Michigan State Fair Aug. 23 will be Karen Eisenmann, Ernest Hinderer, Terri Eisenmann, Janis Eisenmann, sheep-wool, Walter Harris, beef cattle, William P. Blunk, Mrs. Louis Foreman, Mrs. Robert Fitzsimmons, fruit, and William F. Blunk, vegetable.

Pub manager Dave Murphy will pit Jim Gaken, Arden Musbach, Robert Musolf, Odis Richardson, Daniel Murphy, Kenneth Norris, Jack McKinley, Don McKinley, Jim Warrington, Michael Sweet, Don Coppenh, George Heydauff, Doran Keizer, Charles Koehn, and Matt Murphy against fast-pitch All-Stars Bill Pidd, Chuck Matt-off, Bill Bohm, Richard Miller, Gordon Beaman, Robert Dompkey, Frank Miller, Jerry Smith, and Tom Gilien. They are coached by Stan Kozlowski and Don Mac Donald.

14 Years Ago...

Thursday, Aug. 21, 1958

Carpenters are busy with the finishing touches on the new addition at North Elementary school in preparation for its use when school opens Sept. 4.

The following 4-H club members from Chelsea were winners in the 4-H District Elimination contests held recently at Michigan State University: East Lansing: Barbara Bertke, home economics; and Stephen Bristle, dairy judging. Gayle Grove, Chelsea, public school band director, traveled to New York City, N. Y., last week with the Lansing VFW Band, Post No. 701, to participate in a nationwide VFW band contest at Ebbetts Field.

Having completed training at Gunter, AFB, Ala., and an assignment at Stewart AFB, N. Y., Captain Robert F. Schmunk, 28, son of Mr. and Mrs. Arthur Schmunk, 314 Congdon St., arrived July 28 at Selfridge AFB to begin duties as staff physician at the 1st USAF Hospital there.

Arrangements were completed for a tug-of-war team of Kiwanians James and Robert Daniels, Anton Nielson, John Alber, Paul Mann, Carl Schneider, George Palmer, Leo Bishop, Russell McLaughlin, Donald Alber, Henry Thierman, P. G. Schaible and Chandler Rogers to compete against a team of Dexter Kiwanians at the Chel-Rademacher was named manager and coach.

Chelsea volunteer nurses, regis-

trays, and canteen workers for the Cassidy Lake Technical School blood bank clinic are: Mrs. Leigh Palmer, Mrs. Gayle Grove, Mrs. Frances Armstrong, Mrs. Donald Bauer, Mrs. Harold Brooks, Mrs. George Leigh Palmer, Mrs. Robert Trinkle, Mrs. George Turnbull, Mrs. Henry Thierman, Mrs. Warren Daniels, Mrs. Dudley Holmes, Mrs. M. J. Baxter, Mrs. Harold Spaulding, Mrs. D. A. Riker, and Mrs. Lawrence Wacker.

24 Years Ago...

Thursday, Aug. 19, 1948

Mr. and Mrs. John Fletcher and Mr. and Mrs. E. W. Eaton returned Sunday of last week from a two-week vacation at Keweenaw Park at Copper Harbor.

Mrs. Norine Whipple, Mrs. Mildred Breitenwischer, Mrs. Betty Gadd, Mrs. Lucille Looze, and the Misses Hildegard Fontana and Jane Schlosser, members of the Chelsea Rural Classroom Teachers' club attended the summer sessions at Michigan State Normal College at Ypsilanti.

Mr. and Mrs. Charles McDaniels and son, and Mr. and Mrs. E. E. Winans attended the third annual Burkhardt reunion Thursday at the cottage of Mr. and Mrs. Newell Gail at Stony Lake.

Mr. and Mrs. N. H. Miles entertained at a birthday party on Friday the 13th in honor of their son, Johnny, who was four years old. Those present included Mr. and Mrs. George Steele, Miss Rosemary Steele, Mr. and Mrs. Melvin Lesser and son, Jerry, Mr. and Mrs. John Steele and family, Mr. and Mrs. Joseph Steele and family, and Mrs. George Hinderer.

Miss Helen Hander, daughter of Emmett Hander and the late Mrs. Hander, was one of 45 young women to receive the white habit of the Sisters of St. Dominic, of Adrian.

Chelsea people who attended the annual Lammers family reunion Sunday at Clear Lake County Park were Mr. and Mrs. Sylvester Weber, Mr. and Mrs. Albert Doll, Sr., Mr. and Mrs. George Gauthier and children, Mrs. Joseph Merkel, Sr., Mr. and Mrs. Joseph Steele and sons, and Mrs. Bertilla Forner and daughter, Agnes.

34 Years Ago...

Thursday, Aug. 18, 1938

Honoring Emanuel J. Feldkamp on the occasion of his 79th birthday.

MEET YOUR FRIENDS AT INVERNESS INN

Your Innkeepers, Matt and Marge
13996 North Central Rd., North Lake

YOUR FAVORITE MEALS
SHRIMP, CHICKEN & FISH DINNERS

BEER - WINE - LIQUOR Open Mondays

LUNCHEON SPECIALS

Sing-A-Long Saturday Evenings
with Marion at the Organ.

OFFICIAL NOTICE MEETING OF THE DEXTER TOWNSHIP BOARD

will be held
TUESDAY, AUGUST 22, 1972 - 8 p.m.

at the Township Hall, 6800 Dexter-Pinckney Rd.

Topics to be discussed:

1. Mach I Subdivision discussion.
2. Bass Avenue right-of-way.

WILLIAM EISENBEISER
Dexter Township Clerk

Big H August Specials

ALL CALF RAISERS
100 lbs. Calf Starter Flakes
FREE with purchase of
200 lbs. Calf Topper or Calf Raiser

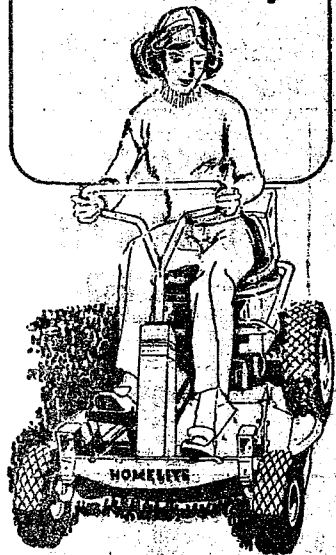
See or Contact
FARMERS' SUPPLY CO.

Chelsea - Phone 475-5511

HONEGGERS & CO., INC.

Chelsea - Phone 475-3611

HOMELITE takes the work out of lawn mowing



Come in and see the 1972 line of Homelite riding mowers and see for yourself how really good equipment can make the job easier.

- Special attachment of mower deck to front blade and rear rollers combine to minimize scalping.
- Self-forming radius for cutting around shrubs and trees.
- Bladed all gear transmission for dependability.
- Plenty of power for pushing a grow flow blade or pulling a cart or lawn roller.
- Wide pneumatic tires are easier on your lawn and easier on the drive.

Choose from four models, front or rear engine. Choose electric or manual starting. Treat yourself and your lawn to the best. Choose Homelite.

HOMELITE
A DIVISION OF THE CHESLEY CO., INC.

The Job Handlers

HURON VALLEY GARDEN CENTER

SALES - SERVICE - RENTALS
Open 9-6 Monday thru Saturday
5024 JACKSON RD.
1/2 mile east of Zeeb Rd.
PHONE 562-6714

"We Service What We Sell"

Established 1871 The Chelsea Standard Telephone GR 5-9581

Excellence Award By Michigan Press Association
1951-1952-1960-1964-1965-1966
Walter P. Leonard, Editor and Publisher

Published every Thursday morning at 800 North Main Street, Chelsea, Mich. 48118, and second class postage paid at Chelsea, Mich., under the Act of March 3, 1879.

Subscription Rates (Payable in Advance)
In Michigan: One Year \$4.00
Six Months \$2.25
Single Copies \$.15
Outside Michigan: One Year \$6.00
Six Months \$3.50
Single Copies \$.20
Service men or women, anywhere, 1 year \$4.00

MEMBER
NATIONAL NEWSPAPER
Association - Founded 1899
National Advertising Representative:
MICHIGAN NEWSPAPERS, INC.
287 Michigan Ave.
East Lansing, Mich. 48828

Area Regional Planning Committee Adopts By-Laws, Studies Problems

A Area Regional Planning Committee met for a regular session Thursday, Sept. 14, to discuss the termination dates for the terms of each member have now been established.

The majority of the meeting was devoted to discussions of activities in Lima and Waterloo townships. Both speakers, Dines from Lima and Bohne of Waterloo, emphasized the role that large outside interests have had in stimulating township's planning efforts. The following notes are the salient points from the two presentations.

Lima — Lima township enacted a zoning ordinance in January, 1961, and formed a township planning commission in April, 1970. A big proposal by outside organizations has caused the involvement of citizens in planning efforts.

The first large proposal was the Mill Creek project that was initiated by the Corps of Engineers. This was defeated by local township citizens groups. Currently, the township is trying to block the Huron-Clinton Metropolitan Authority from developing a large reservoir and park project on some of the township's prime agricultural land.

Other items which Dines emphasized were: 1) the Lima township Board's approval of the conclusions of Johnson, Johnson & Roy; 2) the directive of the Board to move forward into Phase III; and 3) the desirability of continued citizen participation in their planning program within the township.

Waterloo — Waterloo township initiated a planning program in 1965 when it adopted an interim zoning ordinance. In the spring of 1968, this was changed to a permanent ordinance. One of the major problems that has subsequently occurred has been the enforcement at county level. Bohne stated that the Jackson county court system has been so overworked with criminal cases that the courts seldom have time for civil cases.

A second major problem occurred in the winter of 1972, when the Michigan Department of Natural Resources became interested in expanding the Waterloo Recreation Area from 8,500 acres to approximately 17,700 acres. At this time, the Jackson County Planning Commission and the Waterloo Township Board agreed to organize a local planning committee. The local planning organization was given the responsibility to develop a land use plan and a stronger zoning ordinance.

The new land use plan, that is in the process of being debated, is composed of the following nine categories: agricultural I, agricultural II, recreation open space I, rural non-farm residential I, lake residential I, suburban residential I, multi-family residential I, general commercial I, and light industrial I.

The meeting was adjourned at 10:10 p.m.

Robert Ward, secretary.

SPECIAL

thru Wednesday, Aug. 23, 1972

BANANA SPLIT

49¢

(Some of the Erazzer foods)



brazier.

901 S. MAIN ST., CHELSEA PHONE 475-2677

BUDGET-WISE STORE

Chelsea's First Discount Store

116 South Main Street

Phone 475-7501

Continuing Our Stock Reduction Sale

Now Through Saturday, Aug. 26

Our store will be closed Aug. 28 thru Aug. 31 for remodeling.

BUY NOW and SAVE!

- Sudden Beauty Hair Spray . . . 2 for 89¢
- Light Bulbs, 60 or 100 watt . . . 4 for 75¢
- School Lunch Pails with Thermos \$1.99
- Thermos Snack Jar 59¢
- SET OF 6 COLORS
- Water Color Markers 35¢
- STYROFOAM
- Ice Chest, with handles 99¢
- STYROFOAM
- Ice Buckets 10¢
- Storage Wardrobes (only 4) . . . \$3.00
- 8" x 10"
- Picture Frames 99¢
- Stocking Caps, your choice . . . 99¢



STRAT-O-MATIC CHAMP: 13-year-old Don Nadeau took the national championship in the football Strat-O-Matic tournament Saturday, Aug. 12. Nadeau, pictured on the left, outlasted 60 opponents in double elimination competition to earn the trophy he received from a game company representative.

Eight Chelsea Youth Take Part In Strat-O-Matic Convention

Eight Chelsea youths traveled to the first annual S.O.M. (Strat-O-Matic) Convention Saturday, Aug. 12, at Comstock North Elementary school near Kalamazoo. Seventy contestants entered the tournaments.

Chelsea's representatives included: Jon Lewis, Mark Pennington, Craig Coltre, Paul Wood, Keith Cockerline, Mark Dalton, Don Nadeau, and Mike Nadeau.

The convention divided the contestants into two tournaments: football and baseball. In the football tournament, Mark Dalton defeated one of the most respected players in the country on his way to the quarter-finals before bad luck caused his downfall.

In the baseball tournament, 13-year-old Don Nadeau took the national championship, outlasting 60 competitors in double-elimination play. The only game he lost was to Mark Pennington in the semi-finals.

Pennington was his closest challenger, winning the first meeting, by a score of 2-1 in 10 innings. But Nadeau eliminated Pennington in the next game, 5-4. Nadeau received a trophy for his victory.

Strat-O-Matic is composed of information about teams and players in last year's season, statistics of the players, averages, and situation responses, worked out by a computer. The Strat-O-Matic player must coach his team, pick his players, and try to outplay his opponent.

Fair Program . . .

(Continued from page one)

Queen and court will be introduced at the grandstand area. At 6:45, the tractor pulling contest for the heavyweight classes will resume.

Saturday has been designated Queen's Day. A horse show will take place at 9 a.m. Rides and concessions will be operated in the morning. A parade will march through town to the fairgrounds at 1 p.m. The horse show activities will resume at the grandstand area at 2 p.m.

Entertainment will begin at 7 p.m. At 8 p.m., the 1972 Fair Queen will give away the bicycles. The bicycles have been donated by Ingalls Amusement Co. and the Fair Board. They are on display at Dancer's and Foster's Men's Wear. Tickets for these bikes are given at the rides.

Dance festivities by the Stockbridge Squares will begin at 8 p.m.

For Rhubarb pie delight, soften ½ pint vanilla ice cream in refrigerator for about 1 hour. Stir in ½ teaspoon brandy or cherry flavoring. Spoon on rhubarb pie wedges; dust lightly with cinnamon or nutmeg. Makes 1 cup sauce.

**CHELSEA
FINANCE CORP.**
\$25 to \$1,500
For Any
Worthwhile Purpose

See or Call
FRANK HILL
at 475-8631

111 PARK STREET
CHELSEA, MICH.

The Chelsea Standard, Thursday, August 17, 1972 3

Wine
Beer
Liquor
Pop
Cigarettes

JIFFY MARKET

Big Enough To Serve You . . . Small Enough To Know You!
COMPLETE SUPER MARKET - PHONE 475-5701
Corner Sibley & Werkner Rds. Chelsea, Mich.

United States Dept. of Agriculture Authorized Food Stamp Store

STORE HOURS:

7 a.m. to 10 p.m. Daily

SALE PRICES EFFECTIVE

THURS., AUG. 17 thru SUN., AUG. 20

A
Borden's
Ice
Cream
Store

U. S. CHOICE BEEF		U. S. GRADE A	TENDER, YOUNG
CHUCK ROAST		FRYER - ROASTER	FRYING
Blade Cut	T-Bone Cut	Small 7-9 Lb. Avg.	2-2½ Lb. ea. Frozen
Round Bone Cut	English Cut		
59¢	69¢	45¢ lb	98¢ lb

OLD FASHION	HERRUD'S	FARMER PEET'S	FARMER PEET'S	ECKRICH
Smoked SLAB BACON	Chunk BOLOGNA	Slicing SAUSAGE	RING BOLOGNA	Smogas-Pac Lunch Meat
59¢ lb	49¢ lb	69¢ lb	69¢ lb	99¢ pkg.

KLEEN - MAID — FROM WAY BAKING CO.				
WHITE BREAD				
1¼-Lb. Loaf				19¢

CRISPY FLAKE	FRESH	KRAFT	FRESH BAKED	FRESH BAKED
POTATO CHIPS	TOMATOES	VELVEETA CHEESE	COOKIES	Assorted SWEET ROLLS
14-Oz. Bag 49¢	2 lbs 49¢	2-Lb. Box 98¢	49¢ doz.	10¢ ea.

RISDON'S				
HOMOGENIZED MILK				
Gal. Plastic				88¢

COFFEE MATE	U. S. GRADE A	GIANT TIDE	EASY MONDAY	EASY MONDAY
Non-Dairy Creamer	SHAMROCK EGGS	SPRAY STARCH	DETERGENT	
11-Oz. Jar 69¢	Small Doz. 25¢	3-Lb. 1-Oz. Box 79¢	22-Oz. Can 39¢	½-Gal. Plastic 39¢
16-Oz. Jar 89¢				

CRISCO SHORTENING				
3-Lb. Can				79¢

SCHAFFER'S	VERNOR'S	NEW DIXIE	SUNSHINE	40-Lb. & 80-Lb. Bags
Hillbilly BREAD	Lite N Lemony Ginger - Lemon Soda	RIDDLE CUPS	POTATO CHIPS	SALT NUGGETS
3 1¼-Lb. Loaves \$1	1 Pt., 12-Oz. Bottle 29¢	50 Count 49¢	14-Oz. Bag 69¢	40-Lb. Bag \$129

GOLD MEDAL FLOUR				
5-Lb. Bag				39¢

DAILEY'S	PAW PAW	DAILEY'S	CRUSH	SPECIAL SALE
Polish Dill ICICLES	CIDER VINEGAR	KOSHER DILLSPEARS	Orange - Grape Strawberry	POKEMS
1-Pt., 10-Oz. Jar 49¢	1 Gal. Plastic 69¢	1-Pt., 10-Oz. Jar 49¢	6 12-Oz. Cans 79¢	"The Happy Drink" Drink 'em or Freeze 'em 6 pac 29¢ SAVE 20¢

LITE LINE - LOWER IN FAT THAN ICE CREAM				
BORDEN'S ICE MILK				
Assorted Flavors 1½ gal.				49¢

BORDEN'S	JUMBO TREAT	BORDEN'S	BORDEN'S	BORDEN'S
POPSICLES	VANILLA ICE CREAM	SUNDAE CUPS	ICE MILK BARS	ICE CREAM BARS
Elsie Stix Ea. 4¢	\$119	Strawberry - Chocolate 6 pac 69¢	12 pac 69¢	6 pac 59¢

PEPSI COLA . . .				
Mountain Dew or Teem Full Quart				25¢

U. S. NO. 1	HEFTY TALL	VAN CAMP'S	ICE CUBES	Hanover Old Fashion
MICHIGAN POTATOES	KITCHEN BAGS	PORK & BEANS	BEAN SALAD	
20 Lb. Bag 98¢	15-Count Box 49¢	1-Lb. Can 12¢	8-Lb. Bag 59¢	1-Lb., 1-Oz. Jar 39¢

TREESWEET FROZEN				
ORANGE JUICE				
6-Oz. Can				19¢

GAS PUMPS & STORE OPEN 7 a.m. to 10 p.m. — 7 Days A Week

Ads Taken Till 5 p.m. Tuesday

IT'S EASY TO BUY-SELL-RENT-HIRE & FIND WITH

MAINTENANCE ADS

Just Call GR 5-3581

WANT ADS

The Chelsea Standard

WANT AD RATES

PAID IN ADVANCE—All want ads are charged 50 cents for 25 words or less, each insertion. Count each word as a word. For more than 25 words add 2 cents per word for each insertion. "Blind" ads or box numbers add 50 cents per word for each insertion. CHARGE BACKS—Same as cash in advance, with 15 cents bookkeeping charge if not paid before 5 p.m. Tuesday preceding publication. Day in advance, send cash or stamps and save 15 cents.

DISPLAY WANT ADS—Rate, \$1.50 per column inch, single column width only. 8-point and 10-point font type only. No borders or headlines. Minimum 1 inch.

CARDS OF THANKS or MEMORIALS—Single paragraph only, \$1.00 per insertion for 30 words or less; 50 cents per word beyond 30 words.

COPY DEADLINE—5 p.m. Tuesday week of publication.

WANT ADS

ALCOA SIDING SPECIALIST—Since 1938. Service and workmanship guaranteed. William Davis, Ph. Ann Arbor 663-6635. x22

LEHMAN WAHL

Land Appraisal Residential and Farm

17037 West Austin Rd. Manchester, Mich. Area Code 313 428-8893

PATCHING AND PLASTERING

Call 476-7488. x22

CLOGGED SEWER

Reynolds Sewer Service

We Clean Sewers Without Digging Drains Cleaned Electrically

FREE ESTIMATES

2-YEAR GUARANTEE

Phone Ann Arbor ND 2-5277

"Sewer Cleaning Is Our Business" Not a Siding Business

NEED BABYSITTER in my home. Ph. 476-7822 after 5 p.m. x9

WANTED TO BUY White oak burr oak, red elm, hard maple, tulip, poplar, and walnut trees. We pay in advance. Small acreage or large tracts. Contact American Veneer Co. collect. 517-782-1660, or write Box 583, Leslie, Mich. 49251. x11

Special of the Week

1971 Electra 225 4-dr. Vinyl top, air cond. Like new \$4195

USED CARS

1971 Mustang hardtop, sport roof \$2695

1970 LeSabre 4-dr. hardtop (air cond.) \$2695

1969 Olds 98 Luxury Sedan, Steer-o, (air cond.) \$2395

1969 Dodge Monaco 4-dr. Brougham, full power (air cond.) \$1795

1968 Buick LeSabre 2-dr. Vinyl top, Clean \$1495

1968 Ford XL convertible. Real nice. \$1195

1967 Mercury 2-dr. hardtop \$ 895

1967 Pontiac Tempest station wagon \$895

1966 Plymouth station wagon \$ 495

1965 Olds 98 Luxury Sedan, full power, (air cond.) \$ 795

1965 Chev Malibu S.S. Auto, power steering \$595

1963 Ford Galaxie 500 4-dr. One owner. Clean \$ 495

1965 Chev station wagon \$195

1963 Buick LeSabre 4-dr. \$ 195

1962 Volkswagen sunroof \$295

1962 Olds 88 2-dr. hardtop \$ 95

SPRAGUE

Buick-Olds-Opel, Inc.

1500 S. Main St., Chelsea Phone 475-8664

DADS & MOMS—Register your sons, ages 8 thru 13, for Punt, Pass & Kick at Palmer Ford today. 10

1966 Olds 4-dr. hardtop. Runs good. Body fair. Good transportation. \$450. Call 475-2315. x9

SEE SHAKLEE PRODUCTS at the Fair.

WANT ADS

HAMMOND ORGAN teachers wanted to teach in their own homes. Call Grinnell Brothers, Ann Arbor. 662-5697. x41

CALL FRANK for all your carpet cleaning jobs, morning or evening. Needs only 8 hours to dry. Only 10¢ per square foot. Phone now for free estimate. 781-4828. All work guaranteed. x31

PIANO TUNING, Chelsea and area. Facilities for reconditioning and rebuilding. Used piano sales; reconditioned grands and verticals. E. Edmund 484-4429. x50

Contractor Servicing Chelsea, Dexter and Manchester Areas

Complete Home Remodeling Inside and Outside

Specializing in extra living space, recreation rooms, kitchens and paneling. Installing all aluminum products, 5" eavestroughs, custom-made awnings, windows and doors, aluminum siding in many selected colors and styles.

Please Call

DALE COOK

Chelsea 475-8868 x20

NOW Full Time Complete Body Shop Service

Stop in For An Estimate

PALMER FORD

222 S. Main St. 476-3271 x27

KITCHEN HELP WANTED. Apply in person. Chelsea Restaurant. x1

FOR REAL DOLLAR SAVINGS be sure and see us before you buy any new or used car. Palmer Motor Sales, Inc. Your Ford Dealer for over 60 years. x2

G. G. HOPPER

Building Contractors

Phone GR 5-5331

Gregory 498-2148 x40

FOR SALE—Mopar parts: 3.28 ring and pinion for small rear-end, \$20; Stewart-Warner tachometer, \$15; 2 heavy-duty Monroe shocks for rear, \$20; Hi-Rise Edelbrock for 273 Mopar, \$35; 600 cfm Holley 4-barrel with manual secondaries, \$30; also TRW 74 race cam with lifters for small-block Mopar, \$35. Phone 663-8228. x46

Low Low Down Payment On New GOLD KEY MORTGAGES

For information ask your Realtor or call 663-7555.

Ann Arbor Federal Savings

Equal Housing Lender x37

Wedding or Anniversary?

Wedding and reception invitations available in wide range of styles and prices.

10% DISCOUNT on all list prices for wedding stationery.

Come in and let us advise you on your needs.

The Chelsea Standard

800 N. Main Ph. GR 5-3581 x2

CALL NOW SAVE \$\$\$ Greenwood

for Siding - Remodeling

FREE ESTIMATES

Call Chelsea 475-2400 x7

ELECTROLUX VACUUM CLEANERS

SALES and SERVICE

JAMES COX

Ph. 428-2931 or 428-8221 Manchester

WANT ADS

DIAMOND ROOFING, reroofing and repairing. Roof liners installed. Gutters cleaned. Licensed roofer. Call 475-1129. x46

A fine selection of New and Used Cars for immediate delivery

Harper Pontiac Sales & Service

475-5311

Evenings, 761-2099 x1

2-CYCO FUEL WHITE GAS

Available at Gateway Sports Centre, Inc.

476-4411

XEROX COPIES made. Merkel Brothers. x1

ROBERT A. ALDER, licensed contractor. Residential building, remodeling. No job too small. 18200 Boyce Rd., Gregory, Mich. 48137. Phone 498-2539. x47

TOYS & GIFTS PARTY PLAN!

Highest Commissions - Largest Selection! Fantastic Hostess Awards. No Cash Outlay. Call or write "Santa's Parties," Avon, Conn. 06001. Phone 1 (203) 673-3455.

ALSO BOOKING PARTIES x11

GARAGE SALE—525 McKinley St. Large and small miscellaneous items. Saturday, Aug. 19, 8:30 a.m. to 5 p.m. Sunday, Aug. 20, 8:30 a.m. to 3 p.m. x9

Frisinger Realtors

Chelsea 475-5681

Evenings: Paul Frisinger - 475-2621 Herman Koehn - 475-2615 Hope Bushnell - 475-7180 George Frisinger - 475-2903 x9

FOR SALE—1 new Firestone 67-15 whitewall tire. 2 15.6" Ford wheels. Ph. 475-3550 before 3 p.m. x9

POTATOES—Quality, seconds, \$1.50 bushel. 7 a.m. to 8 p.m. No Sunday sales. Carl Schoonover, 9 miles northwest of Chelsea on M-52, right on Boyce Rd., left to 15557 Farnsworth Rd. x9

CASHER WANTED, female. Must be over 18. Call 475-2898. x10

Ice Cream Social

At Spaulding Farm, 3660 Waltrous Rd.

Sunday, Aug. 20

From 2-7 p.m.

Hot dogs, sloppy joes, potato salad, baked beans, soft drinks, ice cream and home-made cake.

Sponsored by Spaulding For Children Auxiliary x9

WANTED—Housekeeper for elderly man. Ph. 475-4191 after 6 p.m. x9

TRASH & TREASURE SALE plus art show. Friday and Saturday, Aug. 18 and 19, at the Bill Robins home, 13888 Old US-12 east. x9

Sold Out Again!

List your property with us for fast, efficient service.

R. D. MILLER REAL ESTATE

Real Estate Broker

15775 Cavanaugh Lake Rd. Chelsea, Mich. x1

THORNTON

Realtor - 475-8628 - Chelsea

Eves: John Pierson 475-2064 Helen Lancaster 475-1198 Bob Riemenschneider 475-4121 Bob Thornton 475-8857 x9

Listen to that "all's-well" purr

Your car's engine will "purr" with contentment after our experts change the oil and give it a good lubrication.

Sweet music to your ears is the purr of your engine, sure promise of pep, power and performance after our servicemen drain the sludge and fill the crankcase of your car with highest quality PURE OIL.

PURE OIL PRODUCTS

Jim's Union 76 Service

Tires — Batteries — Tune-Ups — Brake Service — Wheel Alignment

PHONE 475-2822 501 SOUTH MAIN

WANT ADS

1969 MERCURY 4-dr. sedan, p.s., p.b., auto, gold with black top. \$1995. Gold Crest warranted (12 mos., no limitation on mileage). Devon Lincoln-Mercury, 2100 W. Stadium, Ann Arbor. Ph. 662-5555. x24

Hearthside Yarn Shop

5480 Conway Road

Yarns, needles, accessories

Free instructions in knitting and crocheting with follow-up assistance.

Orders taken for hand-made items.

Ph. 475-2014 x8

CAR RENTAL by the day, week-end, week or month. Full insurance coverage, low rates. Call Lyle Chevrolet, at Palmer Motor Sales GR 5-3271. x25

ALLSTATE INSURANCE

AUTO - BOAT - COMMERCIAL LIFE - HEALTH - HOME

Phone Eves. or Week-ends for N. H. MILES, Agent GR 5-8334 x4

FOR RENT—Fair Services Center for meetings, parties, wedding receptions, etc. Weekdays or weekends. Contact John Waltrous, phone 476-4431. x8

1972 VACUUM CLEANER \$18.95. Brand new sweeper, paint damage in shipment. Excellent working condition. Includes all cleaning tools. Call for demo. Cash price \$18.95 cash. Call Gregory collect 1-813-498-2539 9 a.m. to 9 p.m. Electro Grand. x9

THORNTON

Chelsea 475-8628

JUST LISTED—4-bedroom tri-level with 1 1/2 baths, dining room, family room, patio with gas grill. Near elementary school. x1

COTTAGE—Island-Lake, wooded lot with 90 feet lake frontage. Year around living. Enjoy this beautiful setting.

ONLY 2 1/2 YEARS OLD—On 1 1/2 acres, just outside village limits: 3-bedroom, 1 1/2 baths, attached 2-car garage. A quality custom built home.

GRASS LAKE—3-bedroom ranch, newly painted. Close to schools. Good starter home. \$23,900.

COUNTRY—Ranch home located in heart of Pinckney Recreation Area, close to Half Moon Lake park; 1 1/2 baths, above ground swimming pool, fireplace. A great spot.

BRICK RANCH—3-bedroom, beautiful fireplace, fronting on private drive overlooking Inverness Country Club. A beautiful home in a beautiful setting.

4 BEDROOMS—In the Village, close to shopping and grade school. Reduced to just \$25,900.

LAKE COUNTRY—Beautiful 5-bedroom ranch, fully carpeted, fireplace, recreation room, and even a spot for a horse.

LARGE HOME IN COUNTRY—4 bedrooms, den, recreation room with walkout to patio. Secluded wooded setting.

WOODED LOT—New 3-bedroom, 2 1/2-bath home with 2 fireplaces, family room, full basement, situated on 1 1/2 acres. Chelsea schools.

13 ACRES—Ranch home, 3 bedrooms, carpeted; barn; great view.

10 ACRES—Farm home, needs remodeling; a beautiful setting. Terms.

INCOME PROPERTY—Two in the Village to choose from.

20 ACRES—Farm home; house needs decorating; good out-buildings. Manchester schools.

WANT ADS

OLDS SAX—Alto. Excellent condition. 475-2665. x8

MARY WOLTER REAL ESTATE

7421 Dexter-Pinckney Rd. Dexter, Mich.

Phone 426-8188 or 426-8160

PATTERSON LAKE-FRONT on the point, 2-bedroom summer cottage. Extra lot on both sides, beautiful lake view.

NEAR GREGORY—12"x55" mobile home on 1/4 acre. 2-car garage with heated workshop. Fenced back yard. \$15,000. Terms.

STRAWBERRY LAKE-FRONT—Good location and beach. Interlock log. Full bath, 2 bedrooms and sleeping porch. Best condition. Nicely furnished. Could be year-round. \$27,000.

PATTERSON LAKE-FRONT on large lot. Beautiful setting. Patio, aluminum siding, fireplace, large addition needs some inside finish but livable while doing. Attached garage. Only \$27,000.

STRAWBERRY LAKE-FRONT—Year-round remodeled finished 2 bedrooms. Full bath, good beach, trees. \$24,000.

PATTERSON LAKE PRIVILEGE—Year-round remodeled, 2-bedroom, 1,000 square feet, carpeted, paneled and papered. Very nicely done. Range, refrigerator, washer and dryer included. Good buy at \$19,000.

JOSLIN LAKE-FRONT—Year-round home on 8 acres. Quiet location. \$29,000.

HALF MOON LAKE-FRONT—Attractive year-round 3-bedroom. Aluminum siding, attached garage, gas furnace, fireplace, bath and 1/2, quiet extra large area on point with frontage on 2 lakes. Lovely lawn and landscaping. By appointment only. Make us an offer on this one.

JOSLIN LAKE-FRONT—2-bedroom, part insulated, aluminum siding, on 1 acre. \$24,000. Also, 1 acre vacant with lake privileges. If wanted.

JUST REDUCED—Portage Lake privileges, large building, site close to private beach. Suitable for walk-out lower level home. \$8,500.

NEAR PINCKNEY—6-acre parcel at \$900 per acre. Near M-36.

MARY WOLTER REAL ESTATE

Phone 426-8188 or 426-8160 x10

PUNT, PASS & KICK—Ages 8 thru 13, register today at Palmer Ford. x10

IRISH SETTER PUPS for sale. Male and female. Born July 31st. Take your pick now. Call 476-8795 after 5 p.m. x12

LADIES

Tired of sitting at home? Want a steady year-round job? K-Mart, 215 N. Maple, Ann Arbor, Mich. has positions open in retail sales. Many company-paid benefits.

Apply in person Monday, Wednesday, Thursday and Friday, 10 a.m. to 4 p.m. x10

BABYSITTER WANTED—Monday-Friday. First grader, after school until 5:30 in your home. Previous experience and own children desirable. Prefer south side of town. 475-2751, after 6. x10

HORSE BOARDING—Box stalls and pasture. We do all the work. \$25 a month. Ph. 475-2882. x9

AUCTION

Saturday, August 19 at 12:30 p.m.

2942 Packard Rd., Ann Arbor Located west of Carpenter Rd. at Platt

Antiques, household and miscellaneous. A good selection of hard-to-find antiques and tools.

OWNER: WAYNE KLAGER

L. R. Braun - J. L. Helmer

Auctioneers x9

STONE WORK—Fireplace and masonry. For estimates call 476-1106. x51

'71 YAMAHA 250 Enduro. Good condition with turn signals. Asking \$600. Call 475-2315. x9

GAR - NETT'S Flower & Gift Shop

Your Friendly Florist

112 E. Middle St., Chelsea

PHONE 475-1400

Funeral Flowers Wedding Flowers

Cut Flowers (arranged or boxed) Potted Flowering Plants Green Plants - Corsages

WE DELIVER x9

FOR RENT—First floor 5-room apt. 2 bedrooms, completely furnished, utilities included. Adults only. Available Sept. No pets. 168 Orchard St. x9

WANT ADS

SEE US for transit mixed concrete. Klump Bros. Gravel Co. Phone Chelsea 475-2650, 4920 Loveland Rd., Grass Lake, Mich. x40

Fireplace Builder

Field stone mason, block and brick mason, truck painting.

FREE ESTIMATES

Call 475-8025 after 8 p.m.

Patrick Grammatico x40

AUCTION

Sunday, Aug. 20 at 1:00 p.m.

Antiques, farm equipment and household.

2891 Warren Rd., Ann Arbor

Take Plymouth Rd. to Nixon Rd., north 2 miles.

A fine selection of good, clean antiques. Some farm equipment.

OWNER: RAY H. NIXON

L. R. Braun - J. L. Helmer

Auctioneers x9

FRISINGER

NEW LISTING—3-bedroom 80' long stone and brick ranch on 1 acre. 20'x30' finished and fenced swimming pool. Fireplace, outside entrance to basement. Excellent location. Priced to sell at \$39,500. Chelsea schools.

NEW LISTING—Quality brick, 2-bedroom ranch home, marble tile, 2-car attached garage, full basement, 2 fireplaces, 1 1/2 baths, lot 99'x360'. Chelsea schools.

NEW LISTING—Quaint year-round log home, located on Spring Lake, 2 bedrooms, television room, dining room, stove and refrigerator included. 77'x39' lot. Priced to sell at \$17,000. Sandy beach.

CHELSEA—Excellent family room, central location for schools and shopping, 3 bedrooms with walk-up 3rd story, 2-car garage. Priced to sell at \$37,900.

NEW LISTING—3-bedroom ranch, recreation room, 2 full baths, large fenced yard, close to school. Located in the Village of Grass Lake. Priced at \$25,900.

MINI-ESTATE—This spacious 6-bedroom, 3,000 sq. ft. brick ranch home is ideal for a large or growing family. Dining room, 2 1/2 baths, 26'x26' family room, thermopane windows. 3.3 acres, hillside setting. 20'x40' in-ground swimming pool. Full backstop driveway.

VARIOUS VACANT BUILDING SITES in the Chelsea area, ranging from 2 1/2 acres to 30 to 213 acres.

FOR SALE—Hoover portable washer, used only 6 mos., \$80. Ph. 475-2842. x9

Bus Crash...

(Continued from page-one)

ing to Ann Arbor from a two-week encampment at Camp Al-Quon, which is located on Burt Lake in northern lower Michigan.

Three ambulances from four communities responded to the accident. All the passengers were taken to Bay City St. Joseph Mercy Hospital for treatment. One was returned to Ann Arbor. St. Joseph Mercy Hospital with a head injury. Many of the injured were treated by members of the National Guard, who were returning from Camp Grayling and traveling behind the bus on the freeway.

"The 21-year-old bus driver had taken over when the regular bus driver became ill at a rest area near Midland.

Telephone Your Club News to GR 5-3581.

Friendliness

We serve with the devotion of a true friend.

Staffan Funeral Home

"Funeral Directors for Four Generations"

124 PARK STREET PHONE GR 5-4417

Meats 3 pkgs. 89c

46-OZ. CAN STOKELY'S

Tomato Juice . . 3 for 95c

LARGE, WHITE

Eggs doz. 49c

McDONALD'S ESKIMO PIE

Ice Cream Bars, 6 pac 49c

12-OZ. CANS

Vernor's 6 pac 73c

12-OZ. CANS

Pepsi 8 pac 95c

We Accept U.S.D.A. Food Coupons

SCHNEIDER'S

MEATS - GROCERIES

PHONE 475-7600 121 S. MAIN ST.

Jim's Union 76 Service

Tires — Batteries — Tune-Ups — Brake Service — Wheel Alignment

PHONE 475-2822 501 SOUTH MAIN

CHAIN LINK or bedwood all sizes. Material sold for installation or we will install. 475-8147 or (517) 522-4837 estimate. 52tf

SALE—Inlaid vinyl and linoleum. Also tile. Armstrong and Armstrong. Installed by skilled craftsmen. Estimates, terms. Bros. 475-8621. 82tf

HERBERT PATRICK for home improvement, building and maintenance. Ph. 428-8501. 45tf

EXCESS FLUIDS with Dex-A-Diet, \$1.98 at Chelsea. 12

HAIR SERVICE for household operators, freezers and garages. Call Bill, 428-8814. x7tf

Howell Town & Country, Inc.

BEDROOM home north of Chelsea. Access to Patterson and Lake. Land contract. 82tf

BUILDING SITE at Zuky near private park. \$4,200. 82tf

FRONT HOME—50 feet on Patterson and Lake. New furnace. 82tf

PROPERTY—Duplex, 2 bedrooms, on 6 acres. Call M-36 north of Chelsea. 82tf

Howell Town & Country, Inc.

Local Representative CARLIE WEDMAN Phone 878-3177 426-8758 evenings. x9

MANCHESTER

BEDROOM. One block from stores. Newly decorated. Transferred. 82tf

BEDROOM RANCH—Sharp. 82tf

BUILDING SITE in village. 82tf

PARCELS of land with buildings. 3-80 acres. 82tf

FAHEY REALTY

4534 Fahey Rd. 428-8748 112 S. Washington 428-8348 x9

SALE—Antique cane chairs. In perfect condition; set of 4, \$125. Exceptionally fine old iron bed. Bedside and refinished. Old kitchen cupboard or Dutch safe, partially refinished, \$75. 475-8891. x9

ABYSITTING in my home. Ph. 475-7368. 8tf

PROFESSIONAL CARPET cleaning service expanding to Washburn county. All sizes and types of carpets cleaned, day or night. Call 428-7289 or (517) 522-4337 for free estimate. 52tf

CAR & TRUCK LEASING. For details see Lyle Christwell at Palmer Motor Sales, GR 5-3271. 49tf

SKIN DISORDER? Try Toco. Derm Vitamin E Cream, 1260 IU per tube at Chelsea Drug. -16

LOVE TO SEW? Become a demonstrator for Creative Directions. Teach others the fun of sewing with knits. Receive free fabrics and commissions. For further details, call Ypsilanti, 1-434-3558. x11

WEDDING ANNIVERSARY, social or business. John's Shop can furnish the printing. Ph. 475-7500 evenings or week-ends. -17

WANTED TO RENT—House or cottage. Teacher. No family. References. 475-7528. x9

WE NEED OATS and Hay. Sharon Hills Ranch. Call after 6 p.m. 428-8452. 8tf

WANTED TO BUY—Old quilts and quilt tops in good condition. Call 475-8098. -9

FOR SALE—1966 Chevrolet 1/2 ton pickup. Ford tractor, 8-hp. bladed and cultivated. Ph. 475-4311 or 475-7917. x9

WANTED TO RENT—Farm or country house for 4 U of M students. Ph. Cathy at 781-2017. x9

M & M GRAVEL CO. PAUL MOFFAT 7 miles north of Chelsea, corner of M-52 and Roe Rd. 498-2866

Processed road and driveway gravel. All dirt, washed sand, sea stone, 1/2" to 1" drainfield stone. Mason sand available for our own deliveries only. Loading 6 days from 6 a.m. to 6 p.m. F.O.B. or deliveries. Free estimates on road and driveway building. 9

MY GARAGE won't hold it all. Would like to rent storage space in or near Chelsea. Ph. 475-8173 or 475-5801. 4tf

WANTED—Two or three bee hives with bees and supers. Phone Chelsea 475-2715, ask for Wilson Elwood. Call after 6 p.m. any day. -13

All Insurance Needs In the convenience of your own home—or mine

N. H. Miles, Allstate Call GR 5-8334 after 5 p.m. 45tf

WANTED—Typing to do in my home. Have 3 yrs. secretarial experience. Ph. 475-7850. x9

WANTED TO RENT—Small family needs 2- or 3-bedroom home in Chelsea, beginning Sept. 1. Please call 971-7589. 9

FOR SALE—14-ft. Duo ski boat. Reglass, 55 h.p. Johnson. Ph. 475-2829. 9

4-BEDROOM HOUSE for sale and 5-bedroom house for rent or sale. No pets. Call (517) 591-8930. x9

Real Estate For Sale

2-FAMILY APT.—5 rooms and bath in each apt. Full basement, attached garage.

3-BEDROOM home, ranch type, full basement, 1 1/2-car garage, black-top drive, new modern kitchen.

See or Call Kern Real Estate 616 S. Main or phone 475-8583 or 475-2403 -8tf

FREE TROPICAL FISH—We're moving outstate. Phone 475-2578. x8

FOR SALE—Heavy-duty auger, fits off or on-set PTO, \$100. Ph. 475-2579. x8

LAY-AWAY NOW for Back-To-School DANCER'S

NEW FOR FALL Good Selections DANCER'S

SHOP NOW for Fall and Winter Wear at DANCER'S

FOR SALE—1966 Allstate motor cycle, 125 cc. Excellent condition. Two helmets. \$250. 475-8328. 9

FOR SALE—4 good used M-78-15 tires and 1 new H-78-15 tire. Will sell for any reasonable offer. Call 475-7814. 9

DADS & MOMS—Register your sons, ages 8 thru 19, for Fun, Pass & Kick at Palmer Ford today. 10

FOR SALE—'66 283 Chevrolet Impala. Makes excellent second car. 428-2101. 9tf

FOR SALE—Used innerspring mattress and springs. Ph. 475-7115. 9

BABYSITTER WANTED from Ann Arbor. Sunday, August 20 (BEAUTIFUL NEW LOCATION) 5816 S. Main, Chelsea, MI. 475-2829. 9

WILL DO BABYSITTING in my home. Ph. 475-7095. 12

FOR SALE—'68 Firebird. Automatic V-8, excellent condition, new tires and spare, with pair of studded snow tires. 428-2101. 8tf

A-1 USED CARS

1971 COMET 2-dr.

1970 MUSTANG fastback.

1970 GALAXIE 500 4-dr. One owner.

1969 FORD 4-dr.

1969 FORD 2-dr.

1969 TORINO Convertible.

1969 FAIRLANE wagon V-8, automatic.

1969 FORD Station Wagon.

1968 TORINO GT.

1968 TORINO GT.

1968 GALAXIE 500 4-dr.

1966 MERCURY 4-dr.

TRUCKS

1970 CHEV Pick-up

1969 GMC Pick-up

1969 FORD 1/2-ton Pick-up

1969 DODGE 1/2 ton

1968 GMC 3-ton Van

1967 INTERNATIONAL 1/2 ton

1966 CHEV Panel

1966 FORD 2-ton Van.

PALMER FORD

Open Every Evening Till 9:00 All Day Saturday Chelsea GR 5-3271 x9tf

FOR SALE—Standing hay, second cut, or on wagon, bales, and ear corn. 475-7728. x9

YARD SALE—9820 Central St., Dexter, Aug. 18-1920. x9

FOR SALE—Remington chain saw, 157 roller-nose bar. Almost new. \$100. Ph. 428-9274. x9

WE WANT to get rid of 1960 VW. You may transfer fee and tow away. Good for parts. 180 Island Lake Rd. Ph. 475-8147. x9

YARD SALE—Thurs. & Fri. Aug. 17-18. Girls' outgrown clothing, toys, old Nat'l Geo. magazines, misc. 402 W. Middle, Chelsea. x9

COTTAGE FOR RENT—Available immediately. Three bedrooms. On the lake. Ph. 475-7295. x9

FOR SALE—5-year-old gelding horse, \$200. Also, 6-year-old gelding pony, \$50. Ph. 428-3649. x9

WANTED—House to rent. Transferred family of 4 needs 3- or 4-bedroom house to rent immediately. Please call anytime (313) 899-3957. x10

ANTIQUES MARKET Ann Arbor. Sunday, August 20 (BEAUTIFUL NEW LOCATION) 5816 S. Main, Chelsea, MI. 475-2829. 9

CLARENCE WOOD REAL ESTATE

CAVANAUGH LAKE—Year around 2-bedroom home. Full basement. All rooms newly decorated and carpeted. Oil furnace. Laundry area. A real buy at \$19,500.

BRICK COLONIAL—4 bedrooms, 8 baths, family room with brick fireplace, finished rec. room. Spotless.

2.9 ACRE BUILDING SITE—High, dry, wooded. A perfect spot for your dream home. \$18,500.

CLARENCE WOOD BROKER Efficient, PERSONAL Service 646 Flanders St., Chelsea Phone 475-2033 or 475-8217 9tf

FOR SALE—13 ft. aluminum travel trailer. Stove, ice box, lots of storage space. Excellent condition. \$590. Call 475-8757. x10

SOMETHING NEW

We now have special trained crews for

ALL TYPES of SIDING and ROOFING

GET OUR FREE ESTIMATE PHONE 475-1889

LaFontaine Construction & Development Corp.

LICENSED BUILDERS Chelsea 18

MISCELLANEOUS ITEMS for sale. Jewelry display counters, 3 sections, two straight and one curved; old country store cheese display case; Silverstone wind-up phonograph (table model); coffee grinder; Double-Kay nut warmer; Toledo meat market scales; old post-office front. 426-8838. x9tf

OPEN HOUSE

Saturdays & Sundays 2 to 5 p.m.

Tired of the hustle and bustle of city living? Come to

DALT ACRES at Michigan Center

and see our furnished model at \$26,500

Only 20 minutes west of Chelsea.

I-94 to Race Rd. Exit, left on Race Rd. to Ann Arbor Rd., right on Ann Arbor Rd. 1/4 mile to Portage Rd., left on Portage Rd. 5 1/2 mi. to Lee Rd., right on Lee Rd. 1/4 mi. to Dalt Acres.

While you're inspecting our model sign up for a drawing on a free trip to Disneyworld for you and your family.

We have W. G. Best homes starting at \$20,500 Complete.

Wm. R. Snyder 340 Center St., Michigan Center Ph. (517) 764-0287

Builder of W. G. Best Homes 9

WANTED—Used wood turning lathe. Ph. 475-8270. x10

FOR RENT—Furnished bedroom apartment. All utilities furnished. \$100 mo. Adults only. No drinkers, no pets. Ph. 475-8824. x9

CLARINET—LeBlanc Vito. Must sell. 475-2865. x11

USED HOLTON TROMBONE for sale. Needs some repair. \$75. See at Dexter Quality Cleaners. 428-4141 ev., 428-8683, days. x9

FOR SALE—Mitsubishi with 5 h.p. engine in good condition. Asking \$100. If interested call 475-4151 or 475-8292. x9

FOR SALE—'71 Mansion mobile home, 60'x12'. Skirted, completely furnished. Excellent condition. Call 688-1087. x11

HORSE FOR SALE—Experienced hunter-jumper, 18 hands, dark bay gelding. Needs good rider. \$700. 688-2064. x10

EARN \$15 CASH for 2 hours please work in your home. Ph. 475-7810. x10

WANTED TO BUY—Authentic American Indian artifacts, beads, rowlocks, pipes, birdhouses, baskets, wearing apparel, etc. G. Steinhauer, 1100 Sugar Loaf Lake, Chelsea, Ph. 475-2807. x10

CLEARANCE SALE 73's On The Way

LARK MINI MOTOR HOMES Fully Equipped—Save \$\$\$

USED CARS

'72 DUSTER Twister, sport coupe, 318, automatic, p.s., vinyl roof, radio, white sidewalls, 11,000 miles. New car guarantee \$2595

'71 FORD Torino 500 2-dr. hardtop, 351, 4-bbl., 4-speed, p.s., radio, new white sidewall tires, dark blue finish. \$2295

'69 PLYMOUTH Satellite 2-dr. hardtop, 318, V-8, automatic, p.s., vinyl roof. \$1495

'69 FORD LTD Country Squire wagon, 10-passenger, 390, engine, automatic, p.s., power disc brakes, air conditioning, Michelin tires. \$2095

'68 CONTINENTAL 4-dr. sedan, full power, a.c., leather interior. New steel-belted tires \$1895

'68 PONTIAC Bonneville 2-dr. hardtop 400, V-8, automatic, power steering, buckets, console, vinyl roof, power windows \$1995

'68 PLYMOUTH Satellite 2-dr. hardtop, 318, auto., p.s., vinyl roof, radio. \$995

'67 DODGE Polara 4-dr. hardtop, 333 V-8, auto., p.s., white sidewalls, radio. \$895

'67 FORD Fairlane 500, 2-dr., V-8, 3-speed, p.s., radio, radial tires. \$795

'66 CHRYSLER Newport 4-dr. hardtop, 333, auto., p.s., p.b., sharp. \$595

'66 PLYMOUTH Fury II 4-dr. sedan, 225, auto., p.s., radio. \$595

'66 PLYMOUTH Belvedere 4-dr. sedan, 318 V-8, auto., p.s., radio. \$595

'66 PONTIAC station wagon, V-8, automatic, p.s., p.b. \$195

'66 DODGE Coronet 440 4-dr. sedan, 318, auto., p.s., radio \$595

'66 PLYMOUTH Fury II 6-pass. wagon, 318, auto., p.s., p.b., radio, good tires. \$695

'65 PLYMOUTH 2-dr. sedan, 318, auto., good tires. \$395

'64 OLDS 4-dr. sedan. \$295

TRUCKS

'69 DODGE D-100, 225, 3-speed, radio, sharp. \$1595

'67 DODGE D-200, 318, V-8, automatic, radio. \$950

'65 DODGE D-100, 6-cyl., 3 speed. \$875

Village Motor Sales, Inc. IMPERIAL—CHRYSLER DODGE—PLYMOUTH Phone 475-8861 1185 Manchester Rd., Chelsea Hours: 8 a.m. to 6 p.m. Mon. thru Fri. Until 9 Thursday. 9 a.m. to 2 p.m. Saturday. x9tf

FOR SALE—2 treadle sewing machines, wringer Maytag washer, refrigerator, misc. items. 19200 north M-52. Ph. 475-2523. -9

CUTE BLACK KITTENS—Housebroken. Part Siamese. Free. Ph. 475-7366. -9

GARAGE SALE—Antiques, collectibles, ceramics, 5-pc. chrome dinette set and misc. items. Thurs., Fri., Sat., Sun., Aug. 17-18-19-20. Ph. 475-2242. 1036 Guinan Rd. Sugar Loaf Lake, Chelsea. x9

WANTED—Lawns to mow. Reasonable. Phone 426-3456. x9

YARD SALE—10 a.m. on Sat. and Sun., Aug. 18-19. Dishes, appliances, furniture, kitchenware. Collectibles and useable items. 6704 Clear Lake Rd. 10

Fight Pollution! SHAKLEE PRODUCTS Organic Cleaners

Basic Household Laundry Dishes Food supplements, skin care products. Sandy Bradbury 475-7814 Arlene Schroen Ph. 475-8386 -12

RESPONSIBLE COUPLE seeks home or farm in country within 30 mile radius of Ann Arbor, starting in Sept. or Oct. All house sizes and price ranges considered. Lease or option acceptable. Mr. Simmonds, days: 781-4700, ext. 649. Nights or week-ends: 227-6687. x12

FULL-CHARGE Bookkeeper needed from 9-4, Monday-Friday. For interview call Weber Construction Co. at 475-1897. x10

Ranch Home On rolling 2-acre wooded lot. Beautiful view from every window. 3-4 bedrooms. 20 minutes from Ann Arbor. Mid 50's.

Eibler & St. Amour, Inc. REALTORS 8074 Main St., Dexter 426-4659

Oves, - Call Paul Peltes 426-4022 Dorothy Clapp 878-6845 Burke Fitzgerald 878-6603 9

MOVING TO APT., loving home needed for 2 beautiful poodles. Male black, female cream. Price negotiable. Ph. 789-2003. x9

WANTED SMALL OR MEDIUM SIZED FARM—Would consider land without buildings. Prefer Dexter, Chelsea, Manchester or Pinckney area. Have Dearborn client who has just sold his house. Please call 426-4377, Oril Ferguson, Real Estate Broker. x9tf

WANTED TO BUY standing timber. Call 1-462-3723. x12

TODAY'S THOUGHT

By LOUIS BURGHARDT

Have you ever noticed how some people seldom, if ever, make premature decisions? How they do not make decisions that can not be made effective? How, if pressured for a decision, they often say No because they know No can later be changed more easily to Yes; less easy to change from Yes to No? How when they make a bad decision, they blame themselves, not others?

Lincoln illustrated a good formula for making good decisions. When he was severely criticized he said, "I do the best I know how; the very best I can; and I mean to keep doing so until the end. If the end brings me out all right, what is said about me won't amount to anything. If the end brings me out wrong, ten angels swearing I was right would make no difference."

On that formula there is seldom any need to hesitate, hem or haw. Base firm decisions on Christian standards; use your best judgment, skills and abilities given you by God—and do the best you can. Men who make good decisions know how true this is. BURGHARDT FUNERAL HOME, 214 East Middle St., Chelsea, Mich. Phone 475-4141.

SPECIALS

HECKMAN Cookies 3 pkgs. 83c 20-OZ. BOTTLE HUNT'S

Catsup 32c U.S. NO. 1 MICHIGAN

Potatoes . . 10-lb. bag 53c 10-OZ. PKG. EGKRICH

Smok-y-Links 65c FRESH, CRISP

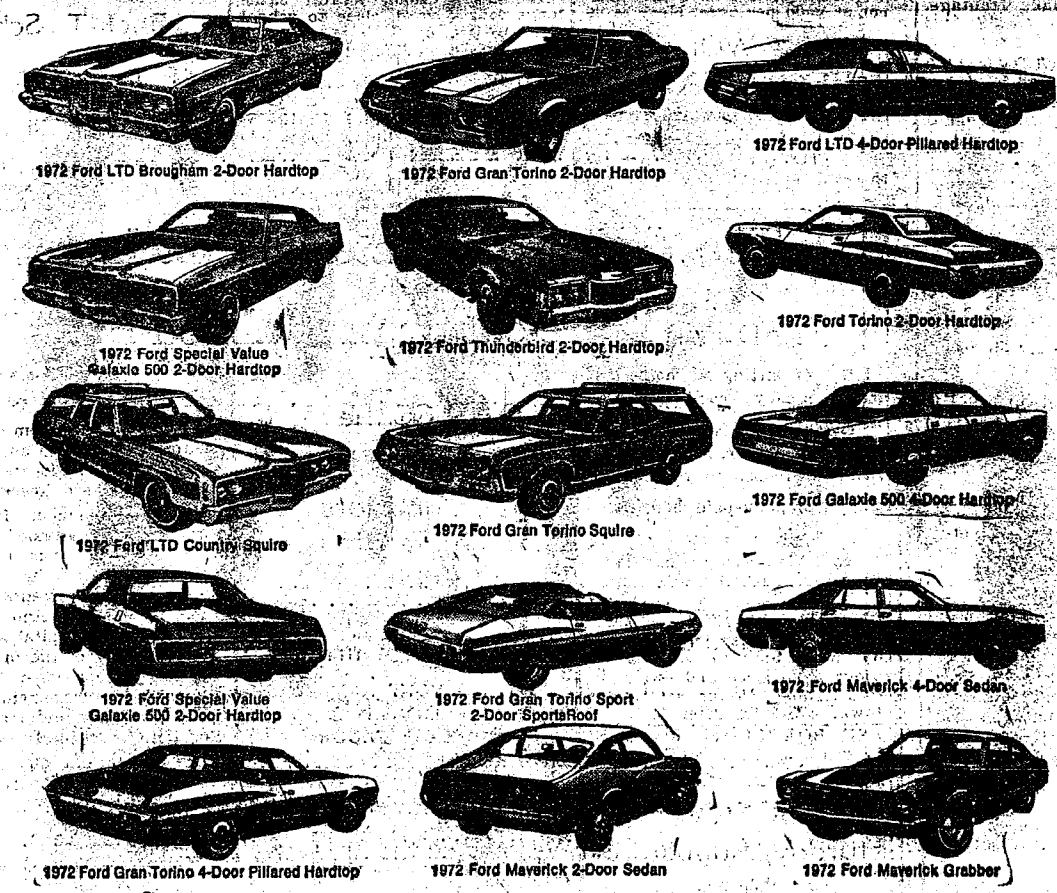
Head Lettuce . . 2 for 29c

We have Howell Honey Sweet Melons

KUSTERER'S

FOOD MARKET

DIAL 475-2721 WE DELIVER



Pick your Ford. If we've got one left... you've got a deal!

This is it—the last and best sale of the year on '72 Fords. Your Ford Dealer has terrific savings in store for you as he makes room for the '73 Fords. But time is definitely running out! Act now to get that '72 Ford you want at a really rock-bottom, year-end price—and you can get a very generous trade-in allowance on your present car. Hurry to your nearest Ford Dealer. You'll never buy a new '72 Ford for less money!



FORD DEALER '72 CLEARANCE SALE

Community Calendar

★ ★ ★

First United Methodist all-church breakfast Sunday, Aug. 27, 7:30 a.m. at Crooked Lake. Tickets from Foster's Men's Wear or church office.

7th and 8th grade band rehearsal Monday, Aug. 21 at 8 p.m. at Beach Middle school.

Mouthpiece impressions for all football players Thursday, Aug. 24, 1 p.m., Dr. Miller's and Dr. Borton's offices.

Ice Cream Social, Sunday, Aug. 20, 2-7 p.m. at Spaulding Farm, 3680 Waltrous Rd. Sponsored by Spaulding for Children Auxiliary. adv9

Senior citizens August birthday pot-luck party Thursday, Aug. 17 at 6:30 p.m. at the Korner House. Committee includes Mr. and Mrs. Joseph Merkel and Erma Mayer.

Rolling Pin bowling league, Tuesday, Aug. 22, 10 a.m., Chelsea Lanes.

Chelsea Rebekah Lodge No. 130 is on vacation until September. Members are asked to notify Nadine Packard of any sick or in distress members.

No August meeting of Limaners.

Chelsea Social Service, second floor of the Municipal Building, is open each Tuesday and Thursday afternoon from 2 p.m. to 3 p.m. to assist persons with problems, either through counseling, or referral to other agencies, when indicated. Limited financial help may be given. The office also maintains a clothing depot for new and used clothing and bedding which is given without charge.

Inquiries regarding the Chelsea blood bank may be directed to Harold Jones in the event that Mrs. Dudley Holmes is unavailable, or to Mrs. Pauline McKenna, American Red Cross in Ann Arbor, 971-5300.

American Legion and Auxiliary hospital equipment available by contacting Don O'Dell at 475-8249.

Pap tests are free for all area women, Tuesday mornings, at St. Joseph Mercy Hospital, Ann Arbor. Call American Cancer Society office, 668-8857, for appointment.

Band parents willing to work at the Sno-Cone booth at the Fair contact Barb Leach, 475-8128.

The sophomore class of '75 is starting to decorate the float for the Chelsea Community Fair. It is being decorated in the garage of David Leach at 1313 Freer Rd., from 9 a.m.-12 noon, 1-4 p.m., and 7-10 p.m., any day, unless otherwise posted. All members are urged to attend.

Olive Lodge No. 156 F&AM annual picnic Thursday, Aug. 17, 6 p.m. at Pierce Park. Bring table service and dish to pass. Masons, Stars, and friends welcome.

Chelsea Suburban Bowling League Wednesday, Aug. 16, 8 p.m. at Chelsea Lanes.

Junior House bowling league, Thursday, Aug. 17, 7:30 p.m., Chelsea Lanes.

Bake Sale sponsored by Elizabeth Circle of the Methodist church Saturday Aug. 19, 9 a.m.-noon in front of Foster's Men's Wear. Proceeds will go toward carpeting the crib nursery. adv9

Chelsea Lanes Mixed League Friday, Aug. 18 at 8 p.m. at Chelsea Lanes.

Mouthguard Molds Will Be Made Aug. 24 For Football Players

Mouthguard impressions for all football players will be given Thursday, Aug. 24 at 1 p.m. at Doctor Miller's and Doctor Borton's offices, next to the Medical Center. All players, Coach Bareis emphasized, high school and junior high, should be there.

Band To Rehearse Monday for Fair Parade

Band Director Warren Mayer has announced that the 7th and 8th grade bands will meet for rehearsal Monday, Aug. 21 at Beach Middle school to prepare for the Chelsea Community Fair parade Tuesday, Aug. 22, which begins at 6 p.m. The band will be lined up by 5:30 p.m.

Cherries give meats a tart lift to cheer the family. Braise a pot-roast in drained canned cherry juice and add the cherries just in time to heat through. Or, heat a can of cherry pie filling to pour over sausage and pancakes for a Sunday brunch.

DEATHS

Mrs. William Frinkel

Waterloo Area Resident, 96, Dies at Cedar Knoll Home

Mrs. William (Minnie L.) Frinkel, 96, died Friday morning, Aug. 11, at Cedar Knoll Rest Home. Born July 1, 1876 in Henrietta township, Jackson county, she was a daughter of Jacob and Louise Stoker Sayers. She married William Frinkel March 16, 1904. He preceded her in death April 26, 1924. She spent most of her life in Waterloo township at 12570 To-phith Rd., Grass Lake. She was a member of the First United Methodist church of Waterloo and the WSCS. She was also a member of the Waterloo Needle Work club. Surviving are a daughter, Mrs. Aldo (Merno) Miller of Jackson; a son, Clay Frinkel of Grass Lake; and a great-granddaughter, Miss Pamela Miller of Palm Springs, Calif.

Funeral services were held 2 p.m. Monday, Aug. 14 at the Cas-bey Funeral Home, Stockbridge, with the Rev. Altha Barnes officiating. Burial followed in Oaklawn Cemetery, Stockbridge.

Girl Scouts Pick Projects For Fair

The Chelsea Girl Scout Fair committee, composed of one girl from each troop, chose to do two things for the Girl Scout booth at the Chelsea Community Fair, Aug. 22-26.

Troops will get together and bake cookies to be sold at the Fair, and are presently involved in a program of arts and crafts to be sold at the Fair. Girls signed up for the classes that they wished to work on, and then met with instructors at their homes to complete the projects.

The arts and crafts, and the instructors for them, are as follows: soap figures, Mrs. George Prinz; magnet caterpillars, Mrs. Philip Roy; yarn owls, Mrs. Philip Roy; candles, Mrs. Carson Jones; macramé, Brenda Holly; felt ornaments, Mrs. George Miller; and pine cone decorations, Mrs. Arthur Steinaway.

Girl Scouts will be at their booth from Wednesday, Aug. 23, through Saturday, Aug. 26.

Band Camp Students Will Return Saturday

Band camp students will return home Saturday, Aug. 19, between 7:30 and 8 p.m. They will disembark at the high school.

Telephone Your Club News To GR 5-3581.



ALL-STAR TEAM: Pictured, left to right, front row, are Ray Stoddard, Bunkie Kenser, Joe Ewald, Steve Check, Brian Burg, John Dunn, Brian Kalish, and Don Aldrich. Standing, left to right, Bary Cattell, coach, Phil Steinhauer, Scott Owings, Jeff Eder, Kurt Owings, John Adams, Victor Vercher, Dean Thompson, John Daniels, and John Check, coach.



MAKING READY FOR THE FAIR: Chelsea youth have gladly given time and energy toward making this year's Chelsea Community Fair a big success. Many turned out to prepare the horse barn for its fair-time occupants, and many more showed up Monday, Aug. 14, despite a late afternoon downpour, to give the barn a fresh coat of paint and make it ready to welcome the fair.

Child Guidance Clinic Offers Mental Health Services to Area

Editor's Note: This is the third of a series of articles describing the functions and services to Chelsea by Community-based member agencies.

The Huron Valley Child Guidance Clinic, located at 2940 Ellsworth Rd., Ypsilanti, is basically a mental health program. The clinic provides out-patient diagnosis and treatment, community service, mainly in the schools, prevention of mental health problems through consultation and educational services.

Fourteen youth in Chelsea received their services in 1971. The clinic serves youth up to 19 years of age, through high school. The clinic staff is available part-time at Chelsea Medical Center.

The Washtenaw Association for Retarded Children is located at 32 N. Washington, Ypsilanti. The association runs a social and recreational program, and is basically supported by Community Chest monies.

Chelsea youth are referred by their school nurse to the association. Program activities include field trips, hay rides, horseback riding, swimming, and

gymnastics. Six buses and drivers are used in the program. The Washtenaw Association for Retarded Children explains itself this way, "Social and recreational opportunities are vital to a complete comprehensive program of service for the retarded in our community and must be supported by our community. We must make available to the retarded, and teach them how to utilize, opportunities comparable to those enjoyed by you and I in our leisure time."

Mayer Dr. Resurfacing Project Authorized

At the regular Chelsea Board of Education meeting held Monday, Aug. 7 the low bid of \$7,048 from the Washtenaw Asphalt Co. of Ann Arbor was accepted for resurfacing the Beach Middle school's Mayer Dr.

Public Hearing Scheduled on Proposed Land Use Agency

A bill which would create a state land-use or land development commission will be the subject of a public meeting to be held Wednesday, Aug. 23, at 2 p.m. at the Middle school, 1441 Platt Rd., Milan.

The bill would also establish a tax structure that would make possible the preservation of open space and farmland.

The legislation was introduced by State Rep. Philip Mastin, chairman of the House Taxation subcommittee on assessment practices.

Mastin says that his bill hopes to preserve and protect natural resources; protect water supplies; soils, wetlands, beaches, and tidal marshes.

The land use commission it would create would inventory and designate areas of the state of critical environmental concern, areas impacted by key facilities. Under the facilities would come power plants and highways. Areas of development and land use for regional benefit would also be considered.

The bill would also enhance the value to the public of adjoining parks, forest wildlife preserves, forests, nature reservations, of sanctuaries, and other open space, according to Mastin. The proposed bill would preserve historic sites, enhance recreation opportunities, and retain a tract

of land in its natural state. The area would be not less than five acres located in an urban area and open to public use.

Mastin explained, "The subcommittee feels that the proposal should be thoroughly discussed and reviewed before any action is taken on it. For this reason, we have scheduled a series of public hearings. Any interested group or individual will be welcome to present testimony to the subcommittee."

Softball Schedule

FAST PITCH
Thursday, Aug. 17 — Wolverine Bar vs. Dunlavy Farms, 6:30 p.m.
Monday, Aug. 21 — Jiffy Market vs. St. Paul's, 6:30 p.m.
Tuesday, Aug. 22 — Zion vs. IPS-CO, 8:30 p.m.
Wednesday, Aug. 23 — City Champs, 7 p.m.
Friday, Aug. 25 — All Star Game, 7 p.m.

SLOW PITCH
Thursday, Aug. 17 — Methodist Church vs. Chrysler Proving Grounds, 8:15 p.m.

REFORMS START AT HOME
Selfishness is usually at the bottom of most human conflicts. You probably can't reform your neighbor, but you can work on yourself.

ORDER NOW!
BOWLING SHIRTS
By Service and Hilton
STRIETER'S MEN'S WEAR
"The Place To Go for Brands You Know"

GETTING OLDER?

The older one grows, generally speaking, the more he appreciates order, manners, and friendships.

WE WILL UNDERBID

The delivered - materials package of ANY pre-cut or pre-fabbed house in our selling area.

SURE IT'S STRONG LANGUAGE... How else can we convince you that the way to save is to custom-build with quality controlled materials from your local building supply center.

(Some customers report savings to \$2,000 on materials alone and savings to \$8,000 when they erect the shell and do the finish work themselves!)

YOU SAY CUSTOM BUILDING TAKES LONGER? A competent local crew can have your home under cover in ONE week!*

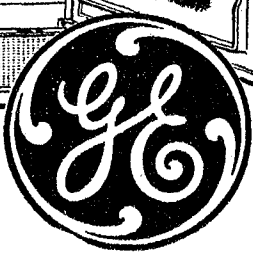
CHELSEA LUMBER CO.

* (Based on a normal 1,500 sq. ft. design with 2 baths, 3 or 4 bedrooms, erected on a completed basement wall.)

BIG CAPACITY LOW, LOW PRICED!



MODEL TA-12SN



General Electric 11.5 cu. ft. Refrigerator with Big 64 lb. Freezer PLUS Low Temperature Chiller Tray Holds up to 19 lbs.!

\$178⁸⁸

Only 28" wide, 61" high! Freezer has 2 Ice 'n Easy Trays. Refrigerator features 3 Cabinet Shelves, extra deep Door Shelf, Vegetable Bin.

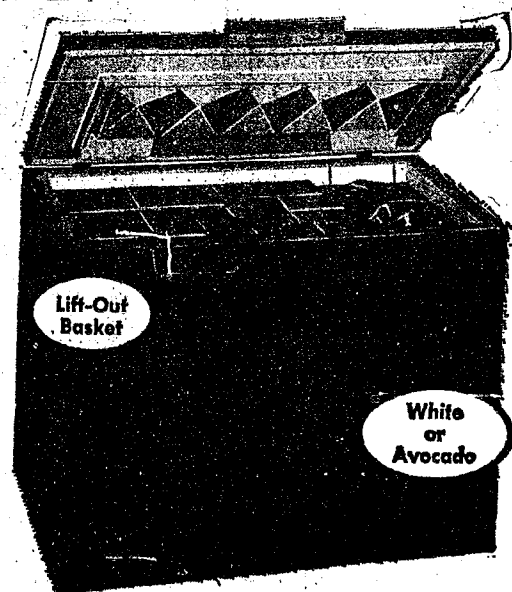


HEYDLAUFF'S

113 North Main, Chelsea

Phone 475-1221

GAMBLES



CORONADO 15.28 Cu. Ft. CHEST FREEZER

Use Our Budget Pay Plan!

\$209⁹⁵

Space age insulation permits 15.28 cu. ft. storage in less floor space. Holds 540 lbs. so you can buy in quantity and save. 31.9-lb. basket; dividers. Magnetic lid seal, lid tight. Adjustable cold control; drain. 4-way warranty.

TO SERVE YOU BETTER!



OPEN

24

HOURS
A DAY

1101 M-52
CHELSEA

'Round the Clock

EVERY DAY

U.S.D.A. CHOICE BEEF CENTER CUT

SAVE 30¢ LB.

CHUCK
STEAK

Lb.

69¢

U.S.D.A. CHOICE BEEF BLADE CUT

SAVE 30¢ LB.

CHUCK
ROAST

Lb.

59¢

U.S.D.A. Choice Beef English or Arm

ROAST lb. 89¢

U.S.D.A. CHOICE BEEF CHUCK

BONELESS ROAST . . . lb. 99¢

U.S.D.A. CHOICE BEEF BONELESS

BEEF STEW lb. 99¢

U.S.D.A. CHOICE BEEF LEAN MEATY

SHORT RIBS lb. 59¢

FRESH GROUND BEEF

CHUCK lb. 89¢

FRESH SLICED

BEEF LIVER lb. 69¢

U.S.D.A. CHOICE BEEF

RIB STEAKS lb. \$1.19

\$1.19

U.S.D.A. CHOICE BEEF STANDING

RIB ROAST Lb. \$1.09

\$1.09

FRESH GROUND ALL BEEF

HAMBURG Lb. 69¢

69¢

FARMER PEET'S HICKORY SMOKED

PICNICS Lb. 49¢

49¢

FARMER PEET'S FARMHOUSE SLICED

BACON lb. 69¢

ASSORTED FARMER PEET'S

LUNCH MEATS lb. 83¢

FARMER PEET'S PLAYTIME

FRANKS lb. 79¢

FARMER PEET'S PURE PORK LINK

SAUSAGE lb. 99¢

HYGRADE ALL MEAT BALL PARK

FRANKS lb. 89¢

HYGRADE PURE PORK ROLL

SAUSAGE lb. 69¢

ARMOUR STAR MIRACURE SLICED

BACON lb. 99¢

LEAN MEATY COUNTRY STYLE

SPARE RIBS lb. 79¢

WILLIE'S

SAUERKRAUT 2-Lb. 29¢

GOV'T INSPECTED PARTS MISSING

CORNISH HENS 16-Oz. 59¢

FRESH DRESSED SPLIT

BROILERS lb. 39¢

ECKRICH REG. OR THICK SLICED

BOLOGNA lb. 109¢

ECKRICH ALL MEAT FUN

FRANKS lb. 89¢

ECKRICH

SMOK-Y-LINKS 10-Oz. 79¢

HOME GROWN VINE RIPE

CANTALOUPE 2 for 88¢

88¢

THOMPSON SEEDLESS

GRAPES lb. 49¢

49¢

MEDIUM U. S. NO. 1

YELLOW ONIONS 3 lbs. 59¢

U. S. NO. 1 MICHIGAN

POTATOES 10 Lb. 69¢

SWEET JUICY

NECTARINES lb. 39¢

CALIFORNIA

CARROTS 2 Lb. 29¢

TENDER BIBB

LETTUCE 2 hds. 39¢

FRESH

DILL Bch. 25¢

ARMOUR STAR PULLMAN SANDWICH STYLE CANNED

HAM 3-Lb. Can \$3.39

SAVE 60¢ WITH COUPON

PILLSBURY HUNGRY JACK INSTANT

POTATOES 16-Oz. Pkg. 45¢

SAVE 10¢ WITH COUPON

IVORY 4-Bar Pak 29¢

SAVE 8¢ WITH COUPON

MAXWELL HOUSE

COFFEE 2 Lb. Can \$1.29

SAVE 25¢ WITH COUPON

SEA PAK FROZEN

ONION RINGS 16-Oz. Pkg. 59¢

SAVE 20¢ WITH COUPON

SEALTEST

2% MILK Gallon 79¢

SAVE 20¢

BORDEN'S

SHERBET 1/2-Gal. 88¢

SEALTEST LIGHT 'N' LIVELY COTTAGE

CHEESE 16-Oz. 1.19

MICHIGAN SOUR

CREAM Pint 39¢

PILLSBURY BUTTERMILK

BISCUITS 6 Ct. 8¢

BOOTH FROZEN

FISH STICKS 24-Oz. Pkg. \$1.09

SAVE 20¢

AUNT JEMIMA FROZEN BUTTERMILK

WAFFLES 10-Oz. Pkgs. 39¢

FLAVORITE FROZEN SPEARS

BROCCOLI 8-Oz. 1.19

FLAVORITE FROZEN BRUSSELS

SPROUTS 4 8-Oz. Pkgs. \$1.19

FLAVORITE FROZEN

CAULIFLOWER 8-Oz. 1.19

MADE RITE

POTATO CHIPS 18-Oz. Bag 79¢

SAVE 20¢

16-OZ. HOLSUM CRUSHED

Wheat Bread 33¢

16-OZ. LOAF SCHAFER'S

Potato Bread 39¢

6 PAK AMERICAN

Candy Sticks 29¢

16-OZ. LOAF SCHAFER'S

Italian Bread 39¢

Coke, Sprite, Tab, Fresca 2 48-Oz. Btles. 89¢

ELF

PEACHES 3 29-Oz. Cans \$1.19

ELF

NOODLES 4 12-Oz. Cans \$1.19

ELF BARTLETT

PEARS 4 16-Oz. Cans \$1.19

ELF

WHOLE UNPEELED

APRICOTS 3 29-Oz. Cans \$1.19

ELF SECTIONS

GRAPEFRUIT 4 16-Oz. Cans \$1.19

ELF

TOMATO

JUICE 3 46-Oz. Cans 99¢

ELF WHOLE KERNEL

CORN 6 15-Oz. Cans \$1.19

ELF

HALVES UNPEELED

APRICOTS 3 16-Oz. Cans 89¢

ELF SWEET

PEAS 6 16-Oz. Cans \$1.19

ELF

A-1

SAUCE 5-Oz. 37¢

ELF

TOMATOES 5 16-Oz. Cans \$1.19

ELF

ORANGE

DRINK 64-Oz. 49¢

ELF CUT GREEN

BEANS 6 15.5-Oz. Cans \$1.19

ELF

TRASH

CAN LINERS 10 Ct. 59¢

ELF RED KIDNEY

BEANS 7 15-Oz. Cans \$1.19

ELF

SALTINE

CRACKERS 16-Oz. 25¢

ELF PORK AND

BEANS 7 15-Oz. Cans \$1.19

ELF

SNACK

CRACKERS 11-Oz. 25¢

ELF WHOLE OR SLICED

POTATOES 7 15-Oz. Cans \$1.19

ELF

ANIMAL

CRACKERS 3 13-Oz. Pkgs. \$1.19

CLIP & SAVE

SAVE 60¢ WITH COUPON
ARMOUR STAR PULLMAN
CANNED HAM
3-Lb. Can \$3.39
With \$3.00 Purchase
EXPIRES AUG. 19, 1972

CLIP & SAVE

SAVE 10¢ WITH COUPON
PILLSBURY HUNGRY JACK
POTATOES
16-Oz. Pkg. 45¢
With \$3.00 Purchase
EXPIRES AUG. 19, 1972

CLIP & SAVE

SAVE 8¢ WITH COUPON
PERSONAL SIZE
IVORY
4-Bar Pak 29¢
With \$3.00 Purchase
EXPIRES AUG. 19, 1972

CLIP & SAVE

SAVE 75¢ WITH COUPON
MAXWELL HOUSE
COFFEE
2-Lb. Can \$1.29
With \$3.00 Purchase
EXPIRES AUG. 19, 1972

CLIP & SAVE

SAVE 20¢ WITH COUPON
SEA PAK FROZEN
ONION RINGS
16-Oz. Pkg. 59¢
With \$3.00 Purchase
EXPIRES AUG. 19, 1972

Men's Softball
All-Star Game
Set for Aug. 25

Chelsea National and American Softball Leagues will meet for their annual All-Star game Friday, Aug. 25, at 7 p.m. at Chelsea High School.

All-Star teams were chosen by the five managers of each division.

Dick Miller of Dunlavy Farms will manage the American League team. American League positions will be filled by the following players.

Catchers: Dan Rendell, Dunlavy Farms; Len Kozma, St. Paul's.

First Base: Tom Detmar, Dunlavy Farms (tie vote); Louis Risner, Palmer Motor Sales; Bill Altenberndt, St. Paul's.

Second Base: Dick Miller, Dunlavy Farms; Jim Sterling, St. Paul's.

Third Base: Gary Armbruster, Palmer Motor Sales; Van Blaricum, Dunlavy Farms.

Shortstop: James Boham, Sweepsters; Don Brooks, IPSCO.

Left Field: Vic Schwartzberger, IPSCO; Paul Miller, Dunlavy Farms.

Center Field: Jim Smith, Dunlavy Farms; Paul Terpstra, St. Paul's.

Right Field: John Pidd, Palmer Motor Sales; Larry Wheeler, Dunlavy Farms.

Pitchers: Tom O'Haver, Dunlavy Farms; Ben Powell, Palmer Motor Sales (tie vote); Dana Jones, Dunlavy Farms.

Jerry Kunzelman of Jiffy Market will manage the National League team. National League positions will be filled by the following players.

Catchers: Oren Wireman, Wolverine Bar; Chuck Leed, Jiffy Market.

First Base: Phil Boham, Wolverine Bar; Dan Wenk, Zion (tie vote); Charles Coleman, Jiffy Market.

Second Base: Ed Berlin, Wolverine Bar; Doug Schoenberg, Zion.

Third Base: Calvin Poe, Wolverine Bar; Duane Clark, Jiffy Market.

Shortstop: Louie Feeman, Jiffy Market; Bob Koengster, Zion.

Left Field: James Wojcik, Wolverine Bar; Duane Bycraft, Zion.

Center Field: Jock Crawford, Wolverine Bar; Loren Heller, Zion (tie vote); Larry Hughes, Cavanaugh Lake Store.

Right Field: Ken Larson, Wolverine Bar; Robert Hoeft, Zion.

Pitchers: Bill Pidd, Jiffy Market; Herb Hinz, Wolverine Bar.

Softball
Results

Standings as of Aug. 10

SLOW PITCH

Team	W	L
North Amer. Rockwell	12	0
Chelsea Teachers	8	4
Chrysler Prov. Grounds	2	9
Methodist Church	1	10

HOME RUNS — SLOW PITCH

John Tash, Chelsea Teachers; Rufus Erwin, Chrysler Proving Grounds; Max Plank, North American Rockwell; Larry Shively, North American Rockwell; Garman, North American Rockwell.

WINNING PITCHERS—SLOW PITCH

Sam Vogel, Chelsea Teachers; and Charles Waller (2), North American Rockwell.

MIGHTY POWERFUL!

Jet streams of high air velocities of 40,000 feet per hour, velocities of 100 to 300 miles an hour, often speeding eastbound jetliners across the North Atlantic in an hour less than westbound flights.



In case of fire do you have "ready money" to rebuild? Better get **Auto-Owners Fire Insurance** See your A-O Man

A. D. MAYER AGENCY, INC.
"Your Protection Is Our Business"
115 Park St. Chelsea
Phone 479-5061

Auto-Owners INSURANCE COMPANY
Member of the A-O Group

QUALITY DRY CLEANING SERVICE

+ Services in Our Churches +

FIRST UNITED METHODIST CHURCH
Rev. Clive Dickins, Pastor
y. Aug. 17—
p.m.—Elizabeth Circle pot-
nic at the Cavanaugh Lake
of Mrs. Robert Daniels.
p.m.—Special Administra-
ard meeting.
y. Aug. 19—
a.m.—Elizabeth Circle Bake
Foster's Men's Wear.
Aug. 20—
a.m.—Worship service.
ation with soloist Rodney
Church school, nursery
3rd grade.
Aug. 21—
a.m.—Girl Scouts will
the kitchen of the church.
y. Aug. 22—
a.m.—Girl Scouts will
the kitchen of the church.

CONGREGATIONAL CHURCH
(United Church of Christ)
The Rev. Paul Gerhart, Pastor
Every Saturday—
6:30-9:00 a.m.—Men's Breakfast
Every Sunday—
9:00 a.m.—Senior High Sunday
school.
9:45 a.m.—Sunday school.
10:00 a.m.—Morning worship.

ST. THOMAS EVANGELICAL LUTHERAN
Ellsworth and Haab Rds.
The Rev. Daniel L. Mattson, Pastor
Sunday, Aug. 20—
10:00 a.m.—Worship with Holy
Communion. Gilbert Meseke, guest
pastor.
11:00 a.m.—Sunday school.
Tuesday, Aug. 22—
10:00 a.m.—Women's Bible stu-
dy.

OUR SAVIOUR LUTHERAN CHURCH
The Rev. William H. Keller, Pastor
1515 S. Main, Chelsea
Each Sunday—
9:00 a.m.—Sunday school.
10:30 a.m.—Worship service.

ST. JOHN'S EVANGELICAL AND REFORMED CHURCH
(United Church of Christ)
Rogers Corners
The Rev. David J. Kleis, Pastor
Every Sunday—
9:00 a.m.—Sunday school.
10:00 a.m.—Morning worship.

SALEM GROVE UNITED METHODIST CHURCH
The Rev. Harry Weeks, Pastor
Every Saturday—
2:30 p.m.—Choir rehearsal.
Every Sunday—
10:00 a.m.—Sunday school.
11:00 a.m.—Worship service.

BETHEL EVANGELICAL AND REFORMED CHURCH
(United Church of Christ)
Freedom Township
The Rev. Roman A. Reineck
Every Sunday—
10:00 a.m.—Worship.
10:00 a.m.—Sunday school.

ST. BARNABAS EPISCOPAL CHURCH
20550 Old US-12
The Rev. C. Walton Fitch, Vicar
Telephone 426-8815
Every Sunday—
9:15 a.m.—Holy Communion,
first, third and fifth Sundays.
9:15 a.m.—Morning Prayer, sec-
ond and fourth Sundays.

ST. PAUL UNITED CHURCH OF CHRIST
(United Church of Christ)
The Rev. Warner Siebert, Pastor
Saturday, Aug. 19—
8:30 a.m.—Teacher training
breakfast.
Sunday, Aug. 20—
9:00 a.m.—Church school and
worship service.
Wednesday-Friday, Aug. 23-25—
Faith in Motion Conference, Al-
ma College.

ST. MARY CATHOLIC CHURCH
The Rev. Fr. Francis Wahowiak, Pastor
Every Saturday—
7:30 p.m.—Mass.
Every Sunday—
6:30, 8:00, 10:00, 11:30 a.m.—
Mass.

FIRST ASSEMBLY OF GOD
The Rev. Thode B. Thodeson, Pastor
Every Sunday—
9:45 a.m.—Sunday school.
11:00 a.m.—Worship service.
7:00 p.m.—Evangelistic service.
Every Wednesday—
7:00 p.m.—Midweek services.

GREGORY BAPTIST CHURCH
The Rev. Grant Lapham, Pastor
Every Sunday—
10:00 a.m.—Worship service.
11:15 a.m.—Church school.
6:30 p.m.—Baptist Youth Fel-
lowship.
7:30 p.m.—Evening worship
service.

IMMANUEL BIBLE CHURCH
145 E. Summit St.
The Rev. LeRoy Johnson, Pastor
Every Sunday—
9:45 a.m.—Sunday school, nur-
sery provided.
11:00 a.m.—Morning worship,
nursery provided.
7:00 p.m.—Evening service.

CHELSEA MEDICAL CENTER
Every Other Wednesday—
1:30 p.m.—Worship service.

ST. JACOB EVANGELICAL LUTHERAN CHURCH
12501 Richmill Rd., Grass Lake
The Rev. Andrew Bloom, Pastor
Every Sunday—
9:00 a.m.—Worship service.
10:15 a.m.—Divine services.
BAHA' FIRESIDE
Every Thursday—
8:00 p.m.—At the Home of Toby
Peterson, 705 S. Main St. Anyone
wishing to learn about the Baha'i
faith is welcome.

VILLAGE UNITED METHODIST CHURCH OF WATERLOO
8118 Washington St.
The Rev. Altha Barnes, Pastor
Every Sunday—
10:00 a.m.—Sunday school.
11:15 a.m.—Morning worship.

NORTH LAKE UNITED METHODIST CHURCH
The Rev. Harry Weeks, Pastor
Every Sunday—
9:30 a.m.—Worship service.
10:30 a.m.—Sunday school.
Every Tuesday—
7:00 p.m.—Choir rehearsal.

WATERLOO FIRST UNITED METHODIST
Parks and Territorial Rds.
The Rev. Altha Barnes, Pastor
Every Sunday—
9:15 a.m.—Morning worship.

NORTH SHARON COMMUNITY BIBLE CHURCH
Sylvan and Washburn Rds.
The Rev. William Ensten, Pastor
Every Sunday—
10:00 a.m.—Sunday school.
11:00 a.m.—Worship service.
6:30 p.m.—Young People's serv-
ice.
Every Wednesday—
7:30 p.m.—Prayer meeting.



IT'S A HIT: Joe Ewald, one of the players on the Little League All-Star team, helps the team get on the scoreboard in the third inning when he rapped out a sharp single. The All-Stars lost to the league champs, Murphy's Barber Shop, by a 9-6 score. The match was aided by good weather and lots of cheering fans.

ST. JOHN'S EVANGELICAL AND REFORMED CHURCH
(United Church of Christ)
Francisco
The Rev. Robert Townley, Pastor
Every Sunday—
10:00 a.m.—Worship service.
10:20 a.m.—Sunday school.

METHODIST HOME CHAPEL
The Rev. R. L. Clemans, Chaplain
Every Sunday—
8:45 a.m.—Worship service.

CHELSEA BAPTIST CHURCH
337 Wilkinson
The Rev. James Stacey, Pastor
Every Sunday—
9:45 a.m.—Sunday school.
11:00 a.m.—Worship service.
Nursery care available during all services.

FIRST UNITED PRESBYTERIAN CHURCH
Unadilla
The Rev. T. H. Liang
Every Sunday—
9:45 a.m.—Sunday school.
11:00 a.m.—Worship service.

CHURCH OF CHRIST
13661 Old US-12, East
Every Sunday—
10:00 a.m.—Church school.
11:00 a.m.—Worship service.
Nursery will be available.
6:00 p.m.—Worship service.
Every Wednesday—
7:30 p.m.—Bible Study.

Flammability standards have been set for upholstered furniture fabrics, although it may be some time before they take effect.

HELLER ELECTRIC & INSULATING
Now
Edison Trained
Electric Heat
Dealer
Call us for estimates on all types of wiring.
We insulate old or new homes with Thermatron insulation and install electric heating systems.
CALL 475-7978 or 475-2096

BOWLERS

TEAMS, MEN, WOMEN NEEDED
For the Following League Times:

SUNDAY NIGHT, 8 p.m. Mixed
MONDAY, 6:40 p.m. and 9 p.m. Men
TUESDAY, 8:30 p.m. Men
WEDNESDAY, 6:30 p.m. and 9 p.m. Women
THURSDAY, 6:40 p.m., Men; 9 p.m. Mixed
FRIDAY, 6:50 p.m. and 9 p.m. Mixed
SATURDAY, 9 a.m. to 2 p.m. Children

18 ASTROLINE LANES - BILLIARDS

CHELSEA LANES, Inc.

PHONE 475-8141

1189 M-52

CHELSEA

Visit the
MARK IV LOUNGE
Now Serving
Your Favorite Beverages

Lunches Starting at 11 a.m.

LOCATION: 1180 M-52, CHELSEA
AT CHELSEA LANES

Want to sell a car? Use a Standard Want Ad!

OLD LANGUAGES
Some of the world's presentday languages existed as early as 1850 B. C.

Inverness Golf League
Standings as of Aug. 14

	Pts.
Star's Flower Shop	53½
Seitz's Tavern	47½
Central Fibre	46½
Chelsea Lanes	44½
Chelsea Milling	44½
3-D Sales	43
Meabon's	39½
Longworth Plating	39
Dana Corp.	39
Dancer's	38
Deli's Paint	35½
A. D. Mayer Ins.	33
Lindell Forging	32½
Palmer's T-Birds	31½
Inverness Inn	31½
Schumm's	30½
The Pub	23½
Chelsea Lumber	22

A HEATED DEBATE?
The Gadsden Purchase, whose 29,640 square miles include part of Arizona and New Mexico, was ratified in 1854 by a narrow margin because many Senators felt the land was not worth \$10 million. Opposition to the sale was even greater in Mexico where Santa Anna, the victor at the Alamo, was banished as a traitor for agreeing to it.

FREWAY BRIDGE SCREENS
Lansing—The State Highway Commission has approved screening of 16 vehicular bridges over Interstate 94 (Ford), US-10 (John Lodge) and Interstate-75 (Chrysler) freeways in Detroit. Records of the Detroit Police Department identify the bridges as the ones from which stones and other objects are most frequently thrown into freeway traffic below.

ACTION AT Jackson

OPENS AUG 21 THRU OCT 28

10 RACES NIGHTLY • POST TIME 8 PM
NIGHTLY DOUBLE & 2 EXACTAS

JACKSON HARNESS RACEWAY
JACKSON, MICHIGAN

ADMISSION \$1.00

YES
WE ARE MAKING
LONG TERM FARM
REAL ESTATE
LOANS

SEE US

Federal LAND BANK Association

P. O. Box 1006
Pk 769-2411 3645 Jackson Rd.
Ann Arbor, Mich. 48103



PROBLEMS??

That's why we're here!

Trust us. We're the guys who know the inside story... and our shop is equipped for any car emergency. Service is our specialty. So bring your problems to us.

TIRES - BATTERIES - ELECTRONIC TUNE-UPS
BRAKE SERVICE - WHEEL ALIGNMENT - WRECKER SERVICE

Fred's Standard Service

889 S. Main, Chelsea

Phone 475-2804

FALL TERM STARTS SEPTEMBER 25

- ★ GRADUATES ARE PLACED Job Opportunities
- ★ STUDENT LOANS Many Work Part Time
- ★ We FILE FORMS FOR TRAINING OF VETERANS
- ★ EXECUTIVE SECRETARIAL SCIENCE! ACCOUNTING; MANAGEMENT MAJORS; BUSINESS SUBJECTS.
- ★ REQUEST CATALOG. VISIT J.B.U. I WILL COME TO YOUR HOME. NO OBLIGATION.

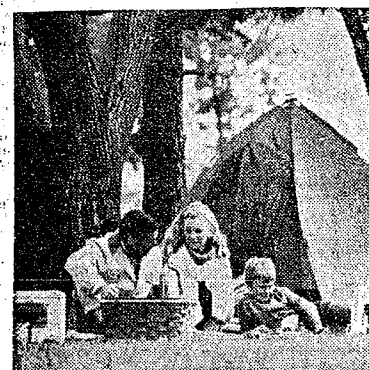
STEPHEN FAIRBANKS,
SECRETARY

JACKSON BUSINESS UNIVERSITY

234 S. Mechanic Street

789-6123

Let our final clearance prices
put more *joy* into your
Summer of '72



CHRYSLER NEWPORT ROYAL



Chrysler
Newport Royal
2-Door Hardtop

FINAL CLEARANCE
~~\$2000~~

PLYMOUTH FURY
FINAL CLEARANCE
~~\$2000~~



Plymouth Fury III
4-Door Sedan

Joy is
knowing
you did
the right
thing in
The
Summer
of '72

PLYMOUTH DUSTER
FINAL CLEARANCE
~~\$2000~~



Duster
2-Door Coupe

AUTHORIZED DEALERS **CHRYSLER**
MOTORS CORPORATION

Final clearance
joy to you from...

VILLAGE MOTOR SALES, INC.

1185 MANCHESTER ROAD

CHELSEA, MICHIGAN

Come to the FAIR

TUESDAY, WEDNESDAY, THURSDAY, FRIDAY, and SATURDAY

5 DAYS - AUG. 22-23-24-25-26

Community Fair Restaurant

FAIR KITCHEN PHONE: 475-1270

Meals and Short Orders will be served at the Community Fair Service Building between the hours of 8 a.m. and midnight of each day. Co-chairmen of this project are Bill and Pat Robbins (Phone 475-2590).

They are assisted by and ask for the support of all ladies in the surrounding community. Any lady who wishes to contribute time or food should contact any of the chairmen. All profit from the Fairgrounds cafe goes to defray fair expenses. Your patronage is needed and will be greatly appreciated.

Dear Friends in the Community:

We need your help. Only with the support of each one of you, can the Fair Kitchen be a success. Anything you donate will be greatly appreciated, especially pies. Sorry, no cream pies—rules from the Health Dept. Further information may be obtained by calling Marg Robbins, 475-7282, or Bernadine Koch, 475-7918. Thank you.

Bill and Pat Robbins

SHORT ORDERS

Available at All Times

Hamburgers, Cheeseburgers, Fishburgers, French Fries, Potato Salad, Baked Beans, Cole Slaw, Cottage Cheese, Home-made Pies, Ice Cream, Coffee, Iced Tea, Milk, Chocolate Milk, Orange and Fruit Drinks, Diet Pop.

BREAKFASTS

Breakfast Menu Same Each Morning
Serving from 7 a.m. until 10:30 a.m.

Bacon - Ham - Eggs - Toast
Pancakes
French Toast - Breakfast Sweet Rolls
Coffee - Milk - Hot Chocolate

LUNCHES

Every Day, 11:30 a.m. to 1:30 p.m.

Hot Beef or Hot Pork Sandwich
With Mashed Potatoes and Gravy
Vegetables and Coffee

TUESDAY DINNER

Zion Luther Ball Club Serving
in afternoon
Kiwanis Club Serving in Evening
Roast Beef - Roast Pork - Meat Loaf

WEDNESDAY DINNER

K. of C. Serving

Roast Beef - Roast Pork
Baked Ham and Sweet Potatoes

THURSDAY DINNER

St. Paul Church Serving

Roast Turkey and Dressing
Roast Beef - Roast Pork

FRIDAY DINNER

Zion Lutheran Church Serving

Swiss Steak
Roast Beef - Roast Pork
Fish Sandwich

SATURDAY DINNER

Zion Lutheran Ball Club Serving
French Fried Chicken
Roast Beef - Roast Pork

★ CHILDREN'S DAY

TUESDAY, AUGUST 22

Program sponsored by Chelsea Kiwanis Club which is providing all prize money.

Chairman: John Morris

AFTERNOON:

- ★ All exhibits on display.
- ★ Rides and concessions by Ingalls Amusement Co. All children's rides at reduced rates 1:00 p.m. to 5:00 p.m.
- ★ Live radio broadcasts from fairgrounds.

EVENING:

Master of Ceremonies: Paul Frisinger

- ★ 6:00 P.M.—Children's parade from the municipal parking lot downtown to the fairgrounds. Sponsored by the Chelsea Kiwanis Club.
- ★ 6:45 P.M.—Ribbon Cutting Ceremony at the gate of the fairgrounds with Village President A. E. "Mac" Fulk, Fair President Allen Broesamle and 1971 Fair Queen Cathy Clark.
- ★ 7:00 P.M.—Live Radio interview with Fair Queen Court and Radio WPAG personalities Frank Giegler and Howard Heath.
- ★ 7:25 P.M.—Selection of Queen Candidates with Paul Frisinger acting as the M.C. of the evening. There will be a program by the Queen Court, Mrs. J. Eubanks, Cathy Clark, Mrs. P. Flintoft, Mrs. A. Musbach, Sherry Owens, Jane Mann.
- ★ 8:15 P.M. or Later—Music by the Lake Valley 4.

★ DEXTER DAY

WEDNESDAY, AUGUST 23

MORNING:

- ★ 9:00 A.M.—Judging of Exhibits.
- ★ 10:00 A.M.—Judging of Livestock (Dairy, Sheep, Swine).

AFTERNOON:

- ★ Continued judging of the horses.
- ★ All exhibits on display i.e. flowers, corn, vegetables.
- ★ Live radio broadcasts from the fairgrounds.
- ★ Rides and concessions by Ingalls Amusement Co.

EVENING:

Master of Ceremonies: Ned Palmer

- ★ 6:45 P.M.—Festivities by the "Stockbridge Squares" dance group.
- ★ 7:20 P.M.—Presentation of Showmanship awards by the 1972 Queen and court.
- ★ 7:30 P.M. to 9:00 P.M.—Livestock Judging at the Grandstand area for the public.

★ CHELSEA DAY

THURSDAY, AUGUST 24

AFTERNOON:

- ★ Weighing in of small compact tractors (garden) at Chelsea Milling Co. beginning at 1 p.m. and ending at 3 p.m.
- ★ 3:00 P.M.—Tractor pulling for the small tractors.

EVENING:

Master of Ceremonies: Herman Koenn

- ★ 6:30 or 6:45 P.M.—CHELSEA-DEXTER-ANN ARBOR Fire Departments will compete for the large "Water Polo" Trophy.
- ★ 7:20 P.M.—Sale of Livestock by Price Bros. Auctioneers.
- ★ 8:15-8:30 P.M.—Resumption of Small Tractor Pull.

★ FARMER'S DAY

FRIDAY, AUGUST 25

Masters of Ceremonies: Don Johnson and Bill Ames

MORNING:

- ★ 8:00 A.M.—Weighing in of tractors at the Chelsea Milling Co.
- ★ 10:00 A.M.—Tractor pulling contest beginning with the light-weight classes.

AFTERNOON:

- ★ Rides and concessions by the Ingalls Amusement Co.
- ★ All exhibits and displays will be open to the public.

EVENING:

- ★ 6:30 P.M.—1972 Queen and Court will be introduced at the grandstand area.
- ★ 6:45 P.M.—Resumption of Tractor Pulling contest for the "Heavyweight" classes.

★ QUEEN'S DAY

SATURDAY, AUGUST 26

MORNING:

- ★ 9:00 A.M.—Horse Show. Mrs. J. Botsford, chairman.

AFTERNOON:

- ★ Rides through the morning by Ingalls Amusement Co.
- ★ 1:00 P.M.—Parade through the town to the fairgrounds.
- ★ 2:00 P.M.—Resumption of Horse Show activities at the grandstand area.

EVENING:

Master of Ceremonies: William Rademacher

- ★ 7:00 P.M.—Entertainment.
- ★ 8:00 P.M.—Queen will give away the bicycles. Tickets will be given away throughout the week.
- ★ 8:00 P.M.—Dance Festivities by the Stockbridge Squares.

PARADE FLOAT PRIZES

\$25.00 - \$15.00 - \$10.00

Duplicate prizes in each of 2 categories
No. 1, Schools, Youth Organizations
No. 2 Civic Organizations and Manufacturers
Each float entitled to one entry in Queen of the Fair Contest.

TWO FREE BICYCLES

Either Boys' or Girls' Depending on Winner
Donated by Ingalls Amusement Co. and Fair Board. Bikes are on display at Dancer's and Foster's Men's Wear. Tickets for these bikes are given at the rides. Bikes are to be given away at 8:00 p.m. Saturday, Aug. 26.

Tractor Pulling Contest

Prizes for each lightweight, middleweight, light-heavy and heavyweight classes donated by local oil distributors. Prizes of \$20.00, \$15.00, \$10.00 and \$5.00 in each class. \$390 in all.

GARDEN TRACTOR PULL

THURSDAY AFTERNOON AND EVENING

Prizes will be awarded in each of 4 classes. \$1.50 Entry fee. 1st, \$20.00; 2nd, \$15.00; 3rd, \$10.00 4th, \$5.00.

FREE ENTERTAINMENT AT GRANDSTAND ARENA

ENTERTAINMENT EXHIBITS SHOWS - PRIZES

FAIR ENTRY CARDS

Available from all Fair Officials or Board of Directors, Committee Chairmen, Chelsea State Bank, Chelsea Hardware, Chelsea Drug, and Farmers' Supply. Check the Premium List on pages 11 and 12 of the July 20 issue of The Chelsea Standard.

HORSE SHOW PRIZES

Ribbons and Trophies for all Events.

Daily Helicopter Rides IN THE AFTERNOONS

ADMISSION

ADULTS: 50c CAR PARKING: 25c
Season Admission Tickets, \$2.50
(Includes Free Parking)
Children Under 12 Admitted Free

BUY A SEASON TICKET FOR ONLY \$2.50 AND USE IT AS OFTEN AS YOU WISH.

This Advertisement Sponsored in the Interest of the Fair by the Following Chelsea Business Firms:

Rick's Market
Al Nalli Music
Meabon's TV, Furniture & Appliance
Chelsea Restaurant
Kern Real Estate
Chelsea Service Co., Laundromat
Dave Rowe Agency
Doug's Ashland Service
Sylvan Hotel & Motel
Clarence Wood Real Estate
Little Flower Shop
A. D. Mayer Insurance Agency

Polly's Master Markets
Farmer's Supply Co.
W. E. Farrell Sheet Metal
McCalla Mobile Feed Service
Honegger's & Co., Inc.
Chelsea Associated Builders, Inc.
Chelsea Lanes, Bowling and Billiards
Wolverine Bar
Rowe & Son Plumbers, Duane Rowe, Owner
Chelsea Greenhouses
Paul Bollinger, Sanitation Services
The Pub

Ralph Fletcher's Foor's Mobil Service
Leonard Reith, Plumbing & Heating
Grove 5c to \$1.00 Store
Ashland Oil Co., Jerry Satterthwaite
Dairy Queen Brazier
Jim's Pure Oil Service Station
Cavanaugh Lake Store
Schumm's Restaurant
Chelsea State Bank
Chelsea Finance Corp.
Gallup-Silkworth Pump & Pantry
Frisinger Realtors

Palmer Motor Sales, Inc.
North Lake Store
Stivers Bar and Restaurant
Village Motor Sales, Chrysler Products
Jiffy Market
Lloyd Bridges Chevrolet
Patty Ann Shoppe
Sprague Buick-Olds-Opel
Wallace Wood, State Farm Insurance
A & W Drive-In
Harper Pontiac Sales & Service
Thompson's Pizza

14th District Court Proceedings

Week of Aug. 8-15

Douglas Harris, Saline, pled guilty to speeding and was sentenced to \$21 fine and costs or five days.

Jane Berry, Saline, pled guilty to speeding and was sentenced to \$39 fine and costs or five days.

Charles Frey, Saline, pled guilty to speeding and was sentenced to \$31 fine and costs or five days.

George Baker, III, pled guilty to speeding and was sentenced to \$31 fine and costs or five days.

John May, Saline, pled guilty to having a dog at large and was sentenced to \$16 fine and costs or 10 days.

Michael Ricker, Ypsilanti, pled guilty to speeding and was sentenced to \$25 fine and costs or five days.

Elmer Armstrong, Detroit, pled guilty to speeding and was sentenced to \$61 fine and costs or 10 days.

Leonard Jones, Albion, pled guilty to not having an operator's license and was sentenced to \$31 fine and costs or five days.

Gene Bryan, Whitmore Lake, pled guilty to careless driving and was sentenced to \$50 fine and costs or 10 days.

Ruth McVean, Whitmore Lake, pled guilty to not having an operator's license and was sentenced to \$40 fine and costs or five days.

Robert Brown, Gregory, pled guilty to not having an operator's license and was sentenced to five days in the county jail.

Helmich Baissenhoel, Dexter, found guilty of speeding and was sentenced to \$31 fine and costs or five days.

Texan Dean, Melvindale, found guilty of larceny under \$100 and was sentenced to \$100 fine and costs or 30 days.

Edwin Barko, Gregory, found guilty of contributing to the delinquency of a minor and was sentenced to \$50 fine and costs and six months probation.

Patrick Hart, Davisburg, found guilty of driving under the influence of liquor and was sentenced to \$150 fine and costs, one year's probation, and no drinking.

Leslie Eisenbeiser, Chelsea, pled guilty to making an improper left turn and was sentenced to \$21 fine and costs.

Thomas Wetherbee, Pinckney, pled guilty to speeding and was sentenced to \$31 fine and costs or five days.

Roger Penning, Saline, pled guilty to speeding and was sentenced to \$21 fine and costs or five days.

Edwin Egeler, Chelsea, pled guilty to speeding and was sentenced to \$31 fine and costs or five days.

Gayle Howe, Pinckney, pled guilty to speeding and was sentenced to \$31 fine and costs or five days.

Paul Henes, Dexter, pled guilty to assault and battery and was sentenced to \$100 fine and costs and one year's probation.

James Kennedy, Brooklyn, found guilty of speeding and was sentenced to \$21 fine and costs or 10 days.

Annie Young, Manchester, found guilty of speeding and was sentenced to \$21 fine and costs or 10 days.

Donald Sutton, Manchester, found guilty of speeding and was sentenced to \$21 fine and costs or 10 days.

Michael Finkbeiner, Clinton, pled guilty to excessive noise and was sentenced to \$10 fine and costs or five days.

Gretchen Ladd, Royal Oak, pled guilty to speeding and was sentenced to \$29 fine and costs or five days.

Pamela Scruggs, Ypsilanti, pled guilty to speeding and was sentenced to \$31 fine and costs or five days.

David Wells, Adrian, pled guilty to speeding and was sentenced to \$25 fine and costs or five days.

James Weller, Brighton, pled no contest to speeding and was sentenced to \$25 fine and costs or five days.

Lorraine Kuzyns, Dearborn, found guilty of impaired driving and was sentenced to \$150 fine and costs or 20 days.

Gary Betts, Milan, pled guilty to speeding and was sentenced to \$41 fine and costs.

Mary Guitner, Inkster, pled guilty to not having an operator's license on a 1971 ticket and was sentenced to \$10 fine and costs or 10 days.

Robert Amman, Ann Arbor, found guilty of speeding and was sentenced to \$61 fine and costs or 10 days.

J. D. Webster, Detroit, pled guilty to being drunk and disorderly and was sentenced to \$50 fine and costs.

Virginia Beaulieu, Holly, pled guilty to being drunk and disorderly and was sentenced to \$50 fine and costs.

James Allen, Dexter, pled guilty to driving on an expired license and was sentenced to \$21 fine and costs or five days.

Diana Mohler, Howell, pled guilty to speeding and was sentenced to \$21 fine and costs.

Mary Jedele, Ann Arbor, pled guilty to running a red light and was sentenced to \$31 fine and costs or 10 days.

Gary Yanik, Dexter, found guilty of having a dog at large and was sentenced to \$16 fine and costs or three days.

Thomas Andrew, Dexter, pled guilty to speeding and was sentenced to \$31 fine and costs or five days.

John Schumacher, pled guilty to not having a fire extinguisher and was sentenced to \$10 fine and costs or five days.

Janet Wilson, Whitmore Lake, pled guilty to furnishing intoxicants to a minor and was sentenced to \$25 fine and costs.

William Knapke, Ann Arbor, pled guilty to driving on an expired license and was sentenced to \$18 fine and costs.

Michael Schreiber, Saline, pled guilty to not having a cycle endorsement and was sentenced to \$16 fine and costs.

Norman Saunder, Saline, pled guilty to making unnecessary noise and was sentenced to \$16 fine and costs.

Thomas Green Accepted In American Academy of Matrimonial Lawyers.

Thomas H. Green, summer resident at Sugar Loaf Lake for the last 17 years and a partner in the law firm of Conlin, Kennedy, Green, O'Hagan & Henry of Ann Arbor, has been recommended by the Board of Examiners and accepted by the Board of Governors as a Fellow of the American Academy of Matrimonial Lawyers.

The American Academy of Matrimonial Lawyers, which has its headquarters in Chicago, Ill., is composed of a select group of lawyers dedicated to the evaluation of the standards of matrimonial law to the end that the welfare of the family and society be preserved.

At the time of Green's election, only 580 other attorneys in the U. S. had been accepted as fellow in the Academy.

Ice Cream Social Set By Adoption Agency

Spaulding for Children Auxiliary will sponsor an old-fashioned Ice Cream Social Sunday, Aug. 20, 2-7 p.m. at the Spaulding Farm, 3860 Waltrous Rd.

The menu will consist of sloppy joes, hot dogs, potato salad, beans, ice cream, soft drinks, and all the cake you can eat.

Proceeds for the social go to Spaulding for Children, an adoption agency working to find homes for parentless children with special needs.



FOUR GENERATIONS gathered at the home of Richard Kern recently to honor his father, Lynn Kern, on his 80th birthday. Pictured left to right: Lynn Kern, Richard Kern, Thomas Kern, and 11-month-old Kevin Kern.

Tennis Champs Determined in Tournament

Results of the tennis tournament sponsored by the Chelsea Recreation Department are in.

In women's singles, Debbie Bertke faced Cindy Bradbury and Nancy Pichlik faced Terry Schreiner.

Bertke, 6-1 and 6-2, faced Schreiner, 6-2 and 6-0. Schreiner was the victor, 6-0 and 6-0.

In women's doubles, Nancy Pichlik and Sherri Plank faced Marian Sprague and June Winans, while Debbie Bertke and Jackie Schiller faced Jane Belser and Terry Schreiner.

The team of Pichlik and Plank took the first round, 6-4 and 6-3. Belser and Schreiner took their match, 6-2 and 6-1. The team of Belser and Schreiner were the champions, 4-6, 6-0, and 6-2.

In mixed doubles, Eloise and George Frisinger played Marilyn and Hugh Wany, with the Wanyts coming out the victors, 4-6, 6-3, and 6-7 to play Sherri and Max Plank, who had been the winners over June Winans and Bruce Rogers, 6-1 and 6-1. The final victors were the Planks, who won by forfeit.

In men's singles, Max Plank faced Eugene Draper, Jim Hanson faced Bob Schafer, Brian Lawton faced Bill Coelius, and Mike Powers faced Jeff Boyd. Plank, who won 6-1 and 6-1, faced Hanson, who had won 6-4 and 6-1. Lawton, 6-0 and 6-0, faced Boyd, also 6-0 and 6-0. Plank and Boyd faced each other in the finals, with Boyd the winner, 6-4 and 6-1.

In men's doubles, Brian Lawton and Eugene Draper faced Jeff Boyd and Bruce Rogers, Jim Hanson and Bob Schafer drew a bye, and Sam Vogel and Ron Adams faced John Taylor and Mike Powers.

The team of Boyd and Rogers, 6-3 and 6-4, faced Hanson and Schafer, and came out the winners, 6-2 and 6-3, to play Taylor and Powers, who had won, 6-4 and 6-1. Boyd and Rogers were the final victors, 6-1 and 6-0.

In boys, 16 and under, Joe Muldoon played Mark Pennington, and won by forfeit, to play the winner of the Jim Powers and Curt Umstead match. Umstead was the winner, 6-2 and 7-6, and carried through all the way to the end, with a 6-0 and 6-1 victory.

Thought For Food

Prepare larger quantities of food that freeze well, and freeze some for another day.

For dessert, keep it simple. Fruit, ice cream, and instant puddings are good to eat and good for you.

Vegetables make good snacks—they score low on calories, high on nutrients. Try cucumber slices, carrot curls, celery sticks, cauliflowerets, cabbage or tomato wedges.

NOW OPEN for Business WE REPAIR AND REPLACE:

- ★ STORE FRONTS
- ★ FURNITURE TOPS
- ★ SHOWER DOORS
- ★ THERMOPANES
- ★ AUTO GLASS - Including Windshields
- ★ MIRRORS
- ★ PATIO DOORS
- ★ TUB ENCLOSURES

Free Pick-up and delivery on auto work.
Storm Door & Window Reglazing & Screens
COMMERCIAL BUILDINGS OR RESIDENTIAL
PROMPT SERVICE REASONABLE PRICES
CALL OR STOP IN

CHELSEA GLASS WORKS

WORKMANSHIP AND MATERIALS FULLY GUARANTEED.
PHONE (313) 475-1147 - OPEN 8 a.m. to 5 p.m.
140 WEST MIDDLE ST. CHELSEA, MICH.

GREAT DESIGNERS!
Indians of Peru produced elaborate textiles as early as 4,000 B.C.

NEW LOW PRICE! McCULLOCH MINI MAC 6

World's most popular lightweight chain saw!

Here's the tool you need to cut the cost of living on a hundred do-it-yourself projects!

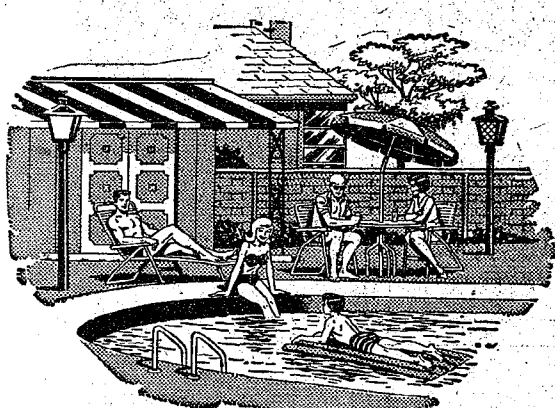
- Weighs only 6½ lbs.*
- Zips thru a 6" log in 5 seconds, fells 2-foot trees!
- Almost as easy to use as an electric carving knife!
- Trim hedges, limb trees, cut your own firewood, build outdoor furniture. Save money every time you use it!

Now Only **\$114⁹⁵**

AND FOR ONLY \$15 MORE MINI MAC 6 AUTOMATIC

• Oils its own bar and chain as it cuts • Extends life of chain, bar and sprocket • Makes cutting easier. Pays for itself • PLUS! a 14" bar and chain on the automatic model • Deluxe Master Grip Handle for extra comfort. Now only \$129.95

FREE DEMONSTRATION AT
CHELSEA HARDWARE
110 South Main St. Phone 475-1121

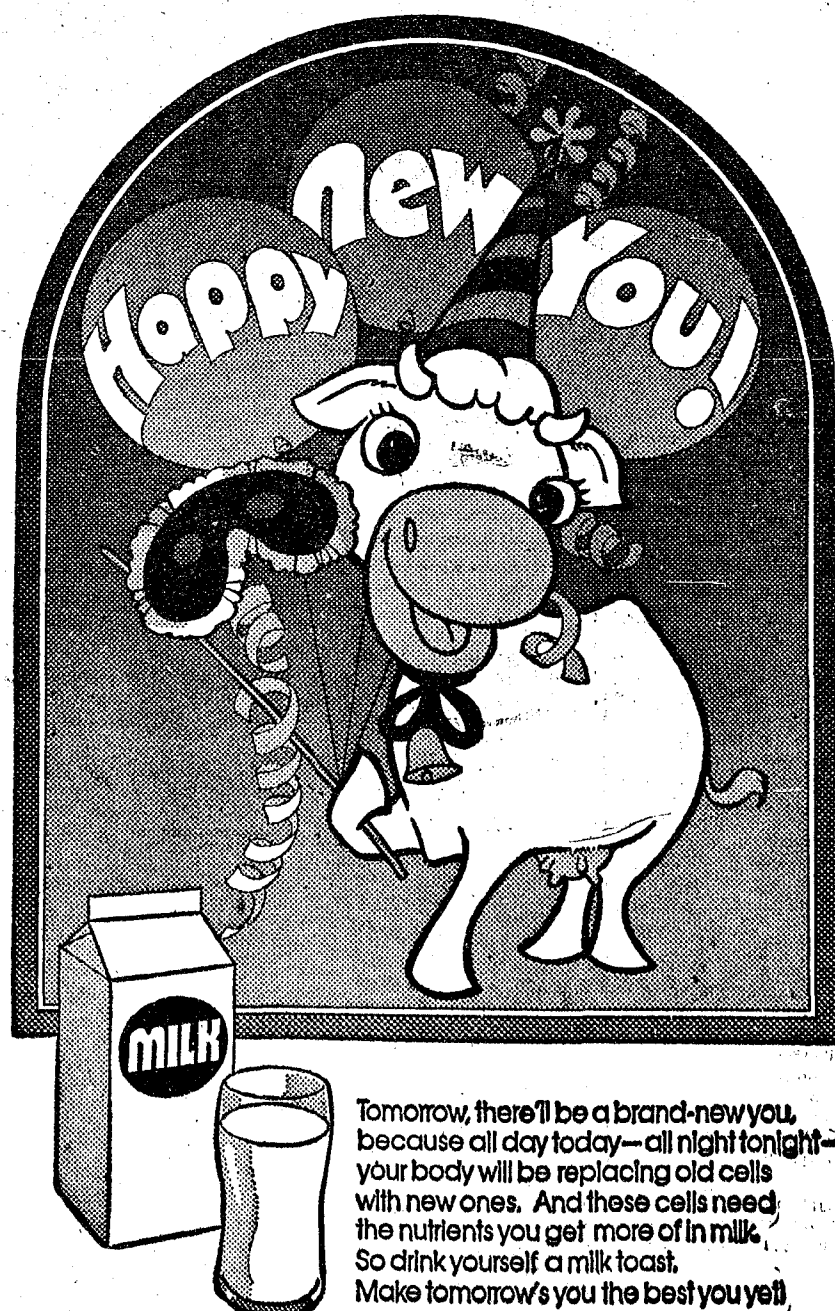


SWIMMING POOLS

The most modern swimming pool equipment available. Pools completely installed or do-it-yourself. Equipment and workmanship fully guaranteed.

FOR INFORMATION

CALL 475-8935



Tomorrow, there'll be a brand-new you, because all day today—all night tonight—your body will be replacing old cells with new ones. And these cells need the nutrients you get more of in milk. So drink yourself a milk toast. Make tomorrow's you the best you yet!

Michigan Milk Producers Association

6% passbook accounts

This is the one investment that you can depend on to make money. It pays an annual effective rate of 6.13% and the principal is not subject to fluctuating market conditions.

The 6% Passbook Certificate Account should be the first step in your investment program. It is a rock solid base from which you can build and is available in amounts of \$5000 or more with 3, 4, or 5 year maturity. (Also available are 5-3/4% Passbook Certificate Accounts with 2 year maturity and 5-1/4% with one year maturity.)

This is a safe investment. It is insured to \$20,000 with FSLIC. Moreover, when you invest at AAFC you are investing with the largest financial institution in Washtenaw County... the leader in savings and mortgages.

THE DEPENDABLE INVESTMENT

ANN ARBOR AAFC
FEDERAL SAVINGS
the savings and loan specialists

ANN ARBOR OFFICE: Downtown Library at Division Westside: Parkside at Stadium Eastside: Huron Parkway at Platt Northside: Plymouth at Nixon CHELSEA: Main Street near Old U.S. 12
Member: Federal Home Loan Bank System • Federal Savings and Loan Insurance Corporation